

Fiscal policy,
banks and the financial crisis



Working Paper Research

by R. Kollmann, M. Ratto, W. Roeger and J. in't Veld

October 2012 **No 234**

Editorial Director

Jan Smets, Member of the Board of Directors of the National Bank of Belgium

Editorial

On October 11-12, 2012 the National Bank of Belgium hosted a Conference on "*Endogenous Financial Risk*".

Papers presented at this conference are made available to a broader audience in the NBB Working Paper Series (www.nbb.be).

Statement of purpose:

The purpose of these working papers is to promote the circulation of research results (Research Series) and analytical studies (Documents Series) made within the National Bank of Belgium or presented by external economists in seminars, conferences and conventions organised by the Bank. The aim is therefore to provide a platform for discussion. The opinions expressed are strictly those of the authors and do not necessarily reflect the views of the National Bank of Belgium.

Orders

For orders and information on subscriptions and reductions: National Bank of Belgium, Documentation - Publications service, boulevard de Berlaimont 14, 1000 Brussels.

Tel +32 2 221 20 33 - Fax +32 2 21 30 42

The Working Papers are available on the website of the Bank: <http://www.nbb.be>.

© National Bank of Belgium, Brussels

All rights reserved.

Reproduction for educational and non-commercial purposes is permitted provided that the source is acknowledged.

ISSN: 1375-680X (print)

ISSN: 1784-2476 (online)

Fiscal Policy, Banks and the Financial Crisis^(*)

Robert Kollmann
ECARES, Université Libre de Bruxelles and CEPR

Marco Ratto
Joint Research Centre, European Commission

Werner Roeger
DG-ECFIN, European Commission

Jan in't Veld
DG-ECFIN, European Commission

October 15, 2012

This paper studies the effectiveness of Euro Area (EA) fiscal policy, during the recent financial crisis, using an estimated New Keynesian model with a bank. A key dimension of policy in the crisis was massive government support for banks—that dimension has so far received little attention in the macroeconomics literature. We use the estimated model to analyze the effects of bank asset losses, of government support for banks, and other fiscal stimulus measures, in the EA. Our results suggest that support for banks had a stabilizing effect on EA output, consumption and investment. Increased government purchases helped to stabilize output, but crowded out consumption. Higher transfers to households had a positive impact on private consumption, but a negligible effect on output and investment. Banking shocks and increased government spending explain half of the rise in the public debt/GDP ratio since the onset of the crisis.

Key words: financial crisis, bank rescue measures, fiscal policy
JEL codes: E62, E32, G21, H63, F41

(*) This paper is forthcoming in the *Journal of Economic Dynamics and Control* (special issue on ‘Fiscal Policy in the Aftermath of the Financial Crisis’). The views expressed in the paper are those of the authors and should not be attributed to the European Commission. We thank an anonymous referee, Stefano Neri, Federico Signoretti and Raf Wouters for advice. Useful comments were also received from workshop participants at the EU Commission, Bank of France, National Bank of Belgium, University of Mannheim and at the SED annual meeting. R. Kollmann thanks the National Bank of Belgium for financial support (‘Endogenous Financial Risk’ grant).

1. Introduction

The financial crisis that erupted in 2007 originated in massive bank losses on US mortgage loans. It spread rapidly to the Euro Area (EA) and other parts of the world, and led to the worst global recession since the Great Depression. These events were countered by sizable fiscal stimulus measures (increased government purchases of goods and services, transfers to households, and tax cuts) and massive government support for banks (e.g., purchases of ‘toxic’ assets and bank recapitalizations by the state). This paper evaluates the efficacy of these measures, using a New Keynesian model with a bank. We estimate the model with EA data (1995-2011), using Bayesian methods.

The key novelty of the study is the quantitative analysis of fiscal policy, in an economy in which the health of the banking system is a key determinant of interest rates and real activity. We assume a rich fiscal policy setup, with distorting taxes, government consumption and investment, and transfers to households and the banking system. A representative bank receives deposits from savers (patient households), and makes loans to impatient households who use their house as collateral. The bank also invests in domestic government bonds, and in foreign bonds. Importantly, the bank faces a capital requirement: she has to finance a fraction of her assets using her own funds (equity). This requirement reflects legal requirements and market pressures. In this structure, bank capital is an important state variable. A loan default lowers bank capital, which raises the spread between the mortgage lending rate and the deposit rate, and leads to a fall in investment, employment and output. Government support to the bank, modeled here as a public transfer to the bank financed by higher taxes, boosts bank capital, lowers spreads, and raises investment and output. Investment drops sharply in financial crises. Thus, government support for banking stabilizes a component of aggregate demand that is especially adversely affected by financial crises. By contrast, higher government consumption crowds out consumption and investment.

We use the estimated model to quantify the main drivers of recent business cycle fluctuations in the EA economy. Bank losses explain about a quarter of the fall in EA GDP and consumption in 2007-09, and more than three-quarters of the fall in private non-residential investment. Our empirical results suggest that government support for banks noticeably dampened the fall in EA GDP, consumption and investment during the crisis. Increased government purchases likewise helped to stabilize output, but crowded out consumption. Higher transfers to households had a positive impact on private consumption, but a negligible effect on output and investment. Banking shocks and increased government spending explain half of the 20 percentage point rise in the public debt/GDP ratio since the

onset of the crisis. Our model also suggests that a default on sovereign debt held by the banking system would disrupt real activity. By contrast, a default on sovereign debt held by households is predicted to have a negligible effect on real activity.

Earlier assessments of fiscal stimulus in the crisis were based on models without banks--see, e.g., Coenen *et al.* (2012), Coenen, Straub and Trabandt (2012), Drautzburg and Uhlig (2011) and Forni and Pisani (2011). Those studies concentrated on the effects of temporary fiscal impulses in the form of increased government purchases of goods and services, transfers to households, and tax cuts. By contrast, the macro-economic effects of the government measures to support banks have, so far, received little attention in the literature. Our paper seeks to fill this gap. The paper also contributes to the literature, by *estimating* a dynamic stochastic general equilibrium (DSGE) model with a rich fiscal policy set-up—whereas the related macro literature has traditionally relied on calibrated models.¹

Before the financial crisis, standard macro theory largely abstracted from financial intermediaries. The crisis has stimulated much research that incorporates banks into DSGE models. See, for example, Gerali *et al.* (2010), Curdia and Woodford (2010), in't Veld *et al.* (2011), Meh and Moran (2010) and Kollmann *et al.* (2011). These papers use calibrated models, abstract from fiscal policy, and do not analyze government bank support measures.² A further contribution of the paper here is that it develops a novel specification of the banking sector. Previous DSGE models assume that banks only accumulate capital through retained earnings, and that banks take deposits from households and lend to the non-financial business sector. Yet, in reality, banks can issue equity to raise capital; also, lending to households is a key activity of banks--in the EA, bank loans to *households* exceed loans to non-financial firms. Our model thus assumes a bank that is owned by an entrepreneur who also owns the production sector--the entrepreneur can use his non-bank wealth to raise the bank's capital. Also, the bank lends to households.³ We show that, although the bank can issue equity, loan default shocks have a persistent negative effect on real activity.

¹ Ratto *et al.* (2009), Forni *et al.* (2009), Leeper *et al.* (2010), Leeper *et al.* (2011), Drautzburg and Uhlig (2011) and Coenen, Straub and Trabandt (2012) likewise estimate DSGE models with fiscal policy.

² Gerali *et al.* (2010) also estimate a DSGE model with a banking sector. Roeger and in't Veld (2012) study the effect of government support for banks, in stylized RBC models. So do Sandri and Valencia (2012), Bianchi (2012) and Haavio *et al.* (2012) who focus on normative issues (we learnt about these papers after the research here was completed).

³ Setups with patient savers and impatient collateral-constrained borrowers have also been considered by Iacoviello (2005) and Iacoviello and Neri (2010), but those authors assumed direct lending (no bank) between these classes of households.

Section 2 describes the model. Section 3 describes the numerical solution and the econometric approach. Section 4 discusses properties of the estimated model. Section 5 concludes.

2. The economy

We consider an open economy with a representative **entrepreneur**, **two workers** and a **government**. The entrepreneur owns a **bank**, an **intermediate good producing firm**, and a **distribution firm**. The two workers provide labor services to the intermediate good producing firm, and accumulate housing capital. The workers have different rates of time preference. In equilibrium, the more patient worker holds financial assets (bank deposits and government debt). The other (impatient) worker borrows from the bank, using her housing capital as collateral. The bank thus acts as an intermediary between the patient worker and the impatient worker. The bank also holds bonds issued by the domestic government and by the rest of the world. Importantly, the bank faces a capital constraint—a fraction of her assets has to be financed using bank capital. The distribution firm sells the intermediate output to firms that aggregate locally produced and imported intermediates into a homogeneous final good. The final good is used for private and public consumption and investment, and exported. The distribution firm has market power. Wages are set by a monopolistic labor union. Nominal prices charged by the distribution firm and nominal wages are sticky. All other markets are competitive. The government levies distorting taxes, and issues debt; a monetary authority sets the nominal interest rate on government debt. We next present the key aspects of agents' decision problems.⁴

2.1. Patient and impatient workers

Workers' welfare depends on final good consumption, hours worked and on their stock of housing capital. There is habit formation for each of these choice variables. Worker $s=i,p$ (i : impatient; p : patient) maximizes

$$E_0 \sum_{t=0}^{\infty} (\beta^s)^t \left\{ \ln(C_t^s - h^C C_{t-1}^s) + \eta^s \ln(H_{t+1}^s - h^H H_t^s) - \frac{\omega^s}{1+\chi} \{N_t^s - h^N N_{t-1}^s\}^{1+\chi} \right\}$$

with $0 < h^C, h^H, h^N < 1$ and $\eta^s, \omega^s, \chi > 0$. C_t^s and N_t^s are the consumption and labor hours of worker $s=i,p$, in period t , while H_{t+1}^s is her stock of housing capital at the end of period t .

The subjective discount factors are β^i and β^p with $\beta^i < \beta^p$. We assume that the rate of time preference of impatient worker is sufficiently high so that, in equilibrium, only the patient worker holds financial assets (bank deposits and government bonds), while the impatient worker borrows from the bank.⁵ The law of motion of the housing stock of worker $s=i,p$ is: $H_{t+1}^s = H_t^s(1-\delta_H) + \iota_t^H J_t^s$, where $0 < \delta_H < 1$ is the depreciation rate of housing, while J_t^s is the worker's gross housing investment, in final good units. ι_t^H is an exogenous shock to the efficiency of housing investment. In period t , worker s has a real tax liability (net of transfers received from the government) of T_t^s (see below).

The period t budget constraint of the **patient worker** is

$$D_{t+1} + B_{t+1}^p + P_t T_t^p + P_t J_t^p + P_t C_t^p = D_t R_t^D + B_t^p R_t^D - P_t \Delta_t^{G,p} + w_t N_t^p,$$

where w_t is the nominal wage rate, while P_t is the final good price. D_t and B_t^p are the bank deposits and government bonds held by that worker at the end of period $t-1$. R_t^D is the gross interest rates on deposits and government bonds.⁶ All domestic financial assets/liabilities are expressed in domestic currency units, and all interest rates are nominal rates. We allow for the possibility of a (partial) default on sovereign debt. This is modeled by assuming that, in period t , the government defaults by an exogenous real amount $\Delta_t^{G,p}$ on the amount $B_t^p R_t$ that it owes to the patient worker.

The budget constraint of the **impatient worker** is

$$L_t R_t^L - P_t \Delta_t^L + P_t T_t^i + P_t J_t^i + P_t C_t^i = L_{t+1} + w_t N_t^i,$$

where L_t is a one-period bank loan received in period $t-1$. R_t^L is the gross loan rate between $t-1$ and t . At t , the impatient worker defaults by an exogenous real amount Δ_t^L on the amount that she owes to the bank, $L_t R_t^L$. The impatient worker uses her housing stock as collateral. Maximum borrowing at t is given by the value of that housing stock, times an exogenous loan-to-value ratio χ_t imposed by the bank. The impatient worker thus faces the collateral

⁴ For the sake of brevity, the following presentation abstracts from adjustment costs (for labor and capital) and variable capital utilization rates that are assumed in the estimated model. These features help to better capture the data dynamics. The detailed model is available on request.

⁵ Both workers have the same habit parameters (h^C, h^H, h^H) and the same long-run Frisch labor supply elasticity, $1/\chi$. By contrast, the utility weights of housing and labor (η^s, ω^s) differ across workers—those weights are set to target the steady state consumption shares of the two workers, and the ratio of residential investment to GDP.

⁶ As sovereign default is modeled in a lump-sum fashion (see below), the patient worker is indifferent between holding deposits and government bonds; thus the interest rates on these assets are equalized.

constraint $L_{t+1}^i \leq \psi_t P_t^H H_{t+1}^i$, where $P_t^H \equiv P_t/t_t^H$ is the price of one unit of housing capital. We assume that β^i and ψ_t are sufficiently low so that the impatient worker always borrows the maximum amount.

2.2. The entrepreneur

The entrepreneur maximizes

$$E_0 \sum_{t=0}^{\infty} (\beta^E)^t \left\{ \ln(C_t^E - h^C C_{t-1}^E) + \eta \ln(H_{t+1}^E - h^H H_t^E) \right\},$$

where C_t^E and H_{t+1}^E are her consumption and housing stock, respectively. The entrepreneur's subjective discount factor lies between those of the two workers: $\beta^i < \beta^E < \beta^p$. This ensures that the steady state interest rate on loans exceeds the deposit rate. The law of motion of the entrepreneur's housing stock is $H_{t+1}^E = H_t^E (1 - \delta_H) + t_t^H J_t^E$, where J_t^E is her housing investment (in final good units). The entrepreneur's period t budget constraint is $P_t C_t^E + P_t J_t^E = d_t^I + d_t^D + d_t^B - P_t T_t^E$, where T_t^E is the entrepreneur's real tax liability, while d_t^I , d_t^D and d_t^B are the dividend of the intermediate good producer, the distributor and the bank, respectively. Each of these three business entities maximizes the present values of profits, discounting future profits using the entrepreneur's intertemporal marginal rate of substitution.

2.2.1. The intermediate good producing firm

The firm has the technology $Y_t = \theta_t (K_t^G)^{\alpha_G} K_t^\alpha N_t^{1-\alpha}$, $\alpha_G > 0, 0 < \alpha < 1$, where Y_t , K_t and N_t are the production of a *homogenous* intermediate good, and the firm's capital and labor inputs, respectively. K_t corresponds to the private non-residential capital stock of this economy (none of the other firms uses physical capital). $\theta_t > 0$ is an exogenous random productivity parameter and K_t^G is the government capital stock (e.g., infrastructure facilities). Government capital is assumed, because the fiscal stimulus measures during the crisis included increased government investment. We assume that an increase in government capital raises *private* output, as a vast theoretical and empirical literature points to productive effects of government capital.⁷

⁷ See, e.g., Aschauer (1980), Barro (1990), Turnovsky (1999) and Basu and Kollmann (2012). Coenen, Straub and Trabandt (2012) also analyze the effects of fiscal stimulus during the crisis, using a model with productive government investment.

The law of motion of the private capital stock is: $K_{t+1}=K_t(1-\delta)+\iota_t I_t$, where $0<\delta<1$ is the capital depreciation rate; I_t is real gross non-residential investment, in final good units. ι_t is an exogenous investment efficiency parameter. $\ln(\theta_t)$ and $\ln(\iota_t)$ follow random walks with positive drift. All other exogenous variables in this model follow univariate stationary AR(1) processes. The growth of potential real output is driven by the ‘total’ technology trend $Z_t \equiv \Psi \cdot (\theta_t)^{1/(1-\alpha_G-\alpha)} (\iota_t)^{\alpha/(1-\alpha_G-\alpha)}$, where $\Psi > 0$ is a scale factor that we set so that the ratio of real GDP to Z equals unity, in steady state.⁸

The intermediate good producer’s period t dividend is: $d_t^I = p_t^I Y_t - w_t N_t - P_t I_t$, where p_t^I is the price of the intermediate good. The following Euler equation characterizes optimal accumulation of non-residential capital, from the entrepreneur’s viewpoint: $E_t \rho_{t,t+1} R_{t+1}^K = 1$, where $R_{t+1}^K \equiv \iota_t \cdot [(p_{t+1}^I / P_{t+1}) \cdot \partial Y_{t+1} / \partial K_{t+1} + (1-\delta) / \iota_{t+1}]$ is the real gross return on private non-residential investment, while $\rho_{t,t+1}$ is the entrepreneur’s intertemporal marginal rate of substitution.⁹ $E_t \rho_{t,t+1} R_{t+1}^K = 1$ and the bank’s Euler equations for bank loans and deposits (see below), imply that the expected return on non-residential investment $E_t R_{t+1}^K$ is closely tied to loan and deposit rates, which implies that non-residential investment is likewise closely related to these interest rates. Empirically, non-residential investment is much less closely related to interest rates. The estimated model thus assumes that the Euler equation for non-residential capital is disturbed by a stationary exogenous random variable $1+\varphi_t$, where φ_t has an unconditional mean of zero ($E\varphi_t=0$):

$$(1+\varphi_t) E_t \rho_{t,t+1} R_{t+1}^K = 1. \quad (1)$$

φ_t can be interpreted as reflecting a bias in the entrepreneur’s date t forecast of the physical investment return R_{t+1}^K .¹⁰

⁸ The trend growth of employment is zero, in the model. The long-term growth rate of government capital equals that of GDP (see below), while the trend growth of non-residential capital equals the sum of the trend growth rates of output and investment efficiency. Thus, the trend growth rate of GDP, denoted by g_{GDP} , is determined by the trend growth rates of θ_t and of ι_t : $g_{GDP} = g_\theta + \alpha_G g_{GDP} + \alpha (g_{GDP} + g_\iota)$. Thus $g_{GDP} = (g_\theta + \alpha g_\iota) / (1 - \alpha_G - \alpha)$, which corresponds to the trend growth rate of Z_t .

⁹ We assume that habit formation is ‘external’, which implies $\rho_{t,t+s} = (\beta^E)^s (C_t^E - h^C C_{t-1}^E) / (C_{t+s}^E - h^C C_{t+s-1}^E)$ for $s \geq 0$.

¹⁰ Assume that the entrepreneur’s beliefs at t about R_{t+1}^K are given by a probability density function, f_t^s , that differs from the true pdf, f_t , by a factor $1/(1+\varphi_t)$: $f_t^s(R_{t+1}^K, \Omega) = f_t(R_{t+1}^K / (1+\varphi_t), \Omega) / (1+\varphi_t)$ where Ω_t is any other random variable. The entrepreneur’s Euler equation for non-residential capital is then given by (1).

2.2.2. The distribution firm

The distribution firm costlessly ‘differentiates’ the homogeneous intermediate good into a continuum of ‘varieties’ indexed by $s \in [0,1]$. These varieties are sold to the final good sector. The final good sector bundles the varieties into a (domestically produced) composite good $Q_t = \left(\int_{s=0}^1 (q_t^s)^{(\nu-1)/\nu} ds \right)^{\nu/(\nu-1)}$ where q_t^s is the amount of variety s , and $\nu > 1$ is the substitution elasticity. Demand for variety s is $q_t^s = (p_t^s / P_t^D)^{-\nu} Q_t$, where p_t^s is the price of variety s , while $P_t^D = \left(\int (p_t^s)^{1-\nu} ds \right)^{1/(1-\nu)}$ is the price (marginal cost) of the domestic composite good. The dividend of the distributor is $d_t^D = \int p_t^s q_t^s ds - p_t^I Y_t$, with $Y_t = \int q_t^s ds$. The distributor acts as a monopolist, and sets prices for each variety subject to Calvo (1983) price adjustment schemes. This implies that the (log) inflation rate of the domestically produced composite good, $\pi_t^D \equiv \ln(P_t^D / P_{t-1}^D)$, obeys an expectational Phillips curve, up to a (log-) linear approximation (e.g., Erceg et al. (2000)):

$$\pi_t^D - \pi^D = \beta^E E_t(\pi_{t+1}^D - \pi^D) + \lambda_D (p_t^I / P_t^D - \frac{\nu-1}{\nu}),$$

where π^D is the steady state inflation rate of the composite good, and $\lambda_D > 0$ is a coefficient that depends on the cost of changing prices.¹¹

2.2.3. The bank

The paper assumes a representative bank.¹² In addition to her deposit and loan activities, the bank invests in one-period government bonds and in an internationally traded bond denominated in foreign currency. The bank’s holdings of government and foreign bonds at the end of period t are denoted by B_{t+1}^B and F_{t+1} respectively. Bank capital at the end of period t is hence $L_{t+1} + B_{t+1}^B + e_t F_{t+1} - D_{t+1}$, where e_t is the nominal exchange rate, defined as the domestic currency price of foreign currency. The bank faces a capital requirement: an exogenous fraction γ of her assets has to be financed using bank capital. This constraint

¹¹ $(\nu-1)/\nu$ is the inverse of the steady state mark-up factor charged by the distribution firm.

¹² The interbank market is thus not modeled here. Frictions in that market would matter for aggregate activity if they affected the total flow of funds from savers to borrowers. The model here generates realistic empirical fluctuations in the loan rate spread and in the total volume of intermediation.

reflects legal requirement and market pressures.¹³ The bank can deviate from the required capital ratio, but this is costly. Let

$$x_t \equiv (L_{t+1} + B_{t+1}^B + e_t F_{t+1} - D_{t+1} - \gamma \cdot (L_{t+1} + B_{t+1}^B + e_t F_{t+1})) / P_t$$

denote the bank's real excess capital (gap between actual capital and the target capital). The bank bears a real cost Φ_t^x in period t (in final good units) if her capital differs from the target:

$$\Phi_t^x = \frac{1}{2} \phi^x \cdot (x_t)^2 / Z_t, \text{ with } \phi^x > 0,$$

where Z_t is the 'total' productivity trend (see above).

To pin down the bank's bond portfolio, we assume that at date t the bank bears real costs $\Phi_t^B = \frac{1}{2} \phi^B \cdot (B_{t+1}^B / P_t - \Gamma^B Z_t)^2 / Z_t$ and $\Phi_t^F = \frac{1}{2} \phi^F \cdot (e_t F_{t+1} / P_t - \Gamma^F Z_t)^2 / Z_t$ (with $\phi^B, \phi^F, \Gamma^B, \Gamma^F > 0$) when her (real) holdings of domestic and foreign bonds deviate from the targets $\Gamma^B Z_t$ and $\Gamma^F Z_t$, respectively.¹⁴ At date t , the bank also bears a real operating cost $\kappa \cdot (L_{t+1} + e_t F_{t+1} + D_{t+1}) / P_t$, where $\kappa > 0$ is a constant.

In period t , the impatient household and the foreign bond issuer default by exogenous real amounts $\Delta_t^L \geq 0$ and $\Delta_t^F \geq 0$ on the sums owed to the bank ($R_t^L L_t, e_t R_t^F F_t$). The total loan loss $(\Delta_t^L + \Delta_t^F) / Z_t$ follows an AR(1) process. Foreign losses are assumed to represent 50% of total losses, consistent with estimates of the geographic origin of the losses suffered by EA banks, during the global financial crisis (see IMF (2010)).

When a loan loss occurs, the government may provide financial assistance to the bank, in the form of a subsidy S_t^B (E.g., when the bank faces loan default, the government may purchase maturing loans from the bank, at *face* value-- S_t^B then is the difference between the face value and the fair value of the loans.)

However, the government itself may become a threat to the bank's health, by defaulting on its debt. Let $\Delta_t^{G,b} \geq 0$ be the (real) amount by which the government defaults on the amount owed to the bank in period t , $R_t^D B_t^B$.

The bank's period t budget constraint is, hence:

¹³ Bank capital requirements are often justified as limiting moral hazard in the presence of informational frictions and deposit insurance (see Freixas and Rochet (2008)). These issues are not explicitly modelled here. Instead, we take the capital requirement as given, and focus on its macroeconomic effects.

¹⁴ Positive bond holdings can be justified by the idea that these bonds provide liquidity services. See Woodford (1980) for a model in which public debt provides liquidity services to the private agents.

$$D_t R_t^D + L_{t+1} + B_{t+1}^B + e_t F_{t+1} + \kappa \cdot (D_{t+1} + L_{t+1} + e_t F_{t+1}) + P_t \Phi_t^x + P_t \Phi_t^B + P_t \Phi_t^F + d_t^B =$$

$$D_{t+1} + L_t R_t^L - P_t \Delta_t^L + B_t^B R_t^D - P_t \Delta_t^{G,B} + e_t F_t R_t^F - P_t \Delta_t^F + P_t S_t^B,$$

where d_t^B is the bank's dividend, and R_t^F is the gross interest rate on the foreign bond.

The bank's Euler equations for deposits and mortgage loans are:

$$R_{t+1}^D E_t(P_t/P_{t+1}) \rho_{t,t+1} = 1 - \kappa + \phi^x \cdot x_t/Z_t, \quad (2)$$

$$R_{t+1}^L E_t(P_t/P_{t+1}) \rho_{t,t+1} = 1 + \kappa + (1 - \gamma) \cdot \phi^x \cdot x_t/Z_t, \quad (3)$$

(Log-)Linear approximations of (1) and (2) imply that the spread between the expected real returns on private non-residential investment and deposits obeys:

$$E_t R_{t+1}^K - (R_{t+1}^D - E_t \pi_{t+1}) \cong \kappa - \phi^x \cdot x_t/Z_t - \varphi_t, \quad (4)$$

with $\pi_{t+1} \equiv \ln(P_{t+1}/P_t)$.¹⁵ To get an intuition for this expression, assume that the bank increases deposits by an amount corresponding to one unit of the final good, in order to increase the dividend, and that the entrepreneur uses the higher dividend to increase the production firm's capital stock. This raises the bank's operating cost by κ , and it lowers the bank's capital by one unit, which increases the bank's cost Φ_t^x by $-\phi^x \cdot x_t/Z_t$. (4) shows that, under optimizing behavior by the entrepreneur, the expected return on physical investment has to equal the entrepreneur's marginal cost of borrowing via the bank, i.e. the sum of the real interest rate on deposits, of the marginal bank operating costs and of the marginal cost of bank leverage, $-\phi^x \cdot x_t/Z_t$. The spread between the real expected return on physical investment and the real deposit rate, $E_t R_{t+1}^K - (R_{t+1}^D - E_t \pi_{t+1})$, thus has to cover the bank's marginal operating cost plus the marginal cost of leverage (less the Euler equation disturbance, φ_t); see (4). In what follows, we refer to that spread as the 'non-residential investment (return) spread'.

Condition (4) is key for understanding the role of the bank capital requirement in the transmission of bank balance sheet shocks to real activity. Note that the marginal cost of leverage is a decreasing function of the bank's excess capital (as $\phi^x > 0$). Hence a negative shock to bank capital *raises* the 'non-residential investment spread'. The simulations discussed below show that the rise in the spread is accompanied by a fall in non-residential investment, and a reduction in real activity. (In the absence of an operative capital

¹⁵ The linear approximations discussed in this Section are taken around $R^K = R^D = R^L = \rho = \pi = 1$, $\kappa = x = 0$.

requirement, $\phi^x=0$, the non-residential investment spread is constant, and shocks to bank capital have little effect on investment and real activity.)

Linear approximations of (2)-(3) show that the spread between the bank loan rate and the deposit rate obeys:

$$R_{t+1}^L - R_{t+1}^D \cong 2\kappa - \gamma \cdot \phi^x \cdot x_t/Z_t.$$

If the bank raises deposits *and* loans by one unit of the final good, then her operating cost increases by 2κ ; excess bank capital falls by γ , which increases the penalty Φ_t^x by $-\gamma \cdot \phi^x \cdot x_t/Z_t$. Optimizing behavior by the entrepreneur requires that the spread between the loan rate and the deposit rate $R_{t+1}^L - R_{t+1}^D$ covers the marginal cost $2\kappa - \gamma \cdot \phi^x \cdot x_t/Z_t$. Hence, the loan–deposit rate spread is a decreasing function of the bank’s excess capital. A negative shock to the bank’s (excess) capital thus raises the lending rate spread $R_{t+1}^L - R_{t+1}^D$; as shown below, this is accompanied by a fall in residential investment.

The sensitivity of the non-residential investment spread and of the lending rate spread to (excess) bank capital hinges on the parameter ϕ^x . Note that $x_t/Z_t \cong (cr_t - \gamma)A$ where $cr_t \equiv (L_{t+1} + B_{t+1}^B + e_t F_{T+1} - D_{t+1}) / (L_{t+1} + B_{t+1}^B + e_t F_{T+1})$ is the bank capital ratio (i.e. the ratio of bank equity to bank assets), while A denotes steady state bank assets (normalized by the total technology trend, Z_t). Thus, a one percentage point rise in the bank capital *ratio* lowers the non-residential investment spread and the lending rate spread by $4\phi^x A$ and by $4\gamma\phi^x A$ percentage points per annum (p.a.), respectively. Hence, the ‘non-residential investment spread’ is more sensitive than the lending rate spread to changes in the bank capital ratio.

2.3. Wage setting

We assume a trade union that ‘differentiates’ homogenous labor hours provided by the two workers into imperfectly substitutable labor services, and then offers these services to the intermediate good-producing firm--the labor input N_t in the producer’s production function (see above) is a CES aggregate of these differentiated labor services. The union sets nominal wage rates of the differentiated labor services to maximize the sum of the expected life-time utilities of the two workers, subject to independent Calvo (1983) wage adjustment schemes for each type of differentiated labor (Kollmann (2001, 2002)). This implies that the (log) growth rate of the nominal wage rate, $\pi_t^w \equiv \ln(w_t/w_{t-1})$, obeys the following wage Phillips curve, up to a (log-)linear approximation (e.g. Erceg et al. (2000)):

$$\pi_t^w - \pi^w = \beta^w E_t(\pi_{t+1}^w - \pi^w) + \lambda_w z_t^w,$$

where β^w is a weighted average of the two workers' discount factors, π^w is steady state wage inflation, and $\lambda_w > 0$ is a coefficient that depends on the cost of changing nominal wages; z_t^w is the gap between a weighted average of workers' marginal rates of substitution between consumption and leisure, and the real wage rate.

2.4. Final good sector

The final good technology is $Y_t = [a^{1/\varepsilon} Q_t^{(\varepsilon-1)/\varepsilon} + (1-a)^{1/\varepsilon} M_t^{(\varepsilon-1)/\varepsilon}]^{\varepsilon/(\varepsilon-1)}$, with $\varepsilon > 0$, where Y_t is final good output. Q_t is the CES aggregate of locally produced intermediate good varieties described above, and M_t is a homogenous imported intermediate good. $0.5 < a < 1$ determines the local content of the final good. The Law of One Price holds for the imported good; the domestic and foreign currency prices of the imported good are $e_t P_t^*$ and P_t^* , respectively.¹⁶ Perfect competition in the final good market implies that its price, P_t , equals its marginal cost: $P_t = [a_t (P_t^D)^{1-\varepsilon} + (1-a_t)(e_t P_t^*)^{1-\varepsilon}]^{1/(1-\varepsilon)}$. The final good is exported, and used for domestic consumption and investment: $Y_t = C_t + G_t + I_t + I_t^G + J_t + X_t$, where $C_t \equiv C_t^i + C_t^p + C_t^E$ is private consumption, I_t^G is government investment, $J_t \equiv J_t^i + J_t^p + J_t^E$ is total residential investment, and X_t are exports.

2.5. Monetary policy

The monetary authority sets the interest rate on government bonds, $r_t = R_t - 1$, as a function of the year-on-year growth rates of GDP and of the final good price:

$$r_t = (1 - \rho^r) \bar{r} + \rho^r r_{t-1} + (1 - \rho^r) [\tau_\pi^r (\frac{1}{4} \ln(P_t/P_{t-4}) - \pi) + \tau_Y^r (\frac{1}{4} \ln(GDP_t/GDP_{t-4}) - g_{GDP})] + \varepsilon_t^r,$$

where π is the steady state quarterly final good inflation rate; ε_t^r is an exogenous mean zero AR(1) disturbance.

¹⁶ P_t^* equals the price level in the rest of the world (RoW). The RoW economy is described by a simplified New Keynesian model without capital. RoW and EA output has the same trend growth rate. The foreign price level equals the price of EA imports. Foreign demand for EA exports is a function of foreign absorption and of the relative price of EA exports.

2.6. Fiscal policy

There are proportional taxes on consumption, labor income and dividend income.¹⁷ We disaggregate government spending into bank support, government consumption, investment and transfers to workers, in order to assess the role of each of these spending items during the crisis. Coenen et al. (2012) show that, in a range of macro-models, the GDP multiplier of tax cuts is smaller than ‘conventional’ government spending multipliers. Thus it seems especially interesting to compare bank support measures to conventional government spending shocks. In order to focus on spending changes, and in order to keep the model manageable, we assume that tax *rates* are time-invariant.¹⁸ Let S_t^s be the real government transfer to worker $s=i,p$ (in final good units). The real *net* tax paid by worker $s=i,p$ (T_t^s) equals thus her real consumption and labor tax liabilities, minus the transfer S_t^s . Each worker receives a time-invariant share of the *total* transfer $S_t \equiv S_t^i + S_t^p$ that is set according to a policy rule discussed below.¹⁹ The real tax paid by the entrepreneur (T_t^E) is the sum of her real consumption and dividend tax liabilities.

Real Government consumption, investment and transfers to workers track the total technology trend Z_t , and respond to deviations of the public debt and deficit from long run targets for these variables, according to these policy rules:

$$c_t^G = (1 - \rho^{CG}) \bar{c}^G + \rho^{CG} c_{t-1}^G - \tau_B^{CG} (B_t / (GDP_{t-1} P_{t-1}) - \bar{B}) - \tau_\delta^{CG} (\delta_{t-1}^B / GDP_{t-1} - \bar{\delta}^B) + \varepsilon_t^{CG}, \quad (5)$$

$$i_t^G = (1 - \rho^{IG}) \bar{i}^G + \rho^{IG} i_{t-1}^G - \tau_B^{IG} (B_t / (GDP_{t-1} P_{t-1}) - \bar{B}) - \tau_\delta^{IG} (\delta_{t-1}^B / GDP_{t-1} - \bar{\delta}^B) + \varepsilon_t^{IG}, \quad (6)$$

$$s_t = (1 - \rho^S) \bar{s} + \rho^S s_{t-1} - \tau_B^S (B_t / (GDP_{t-1} P_{t-1}) - \bar{B}) - \tau_\delta^S (\delta_{t-1}^B / GDP_{t-1} - \bar{\delta}^B) + \varepsilon_t^S, \quad (7)$$

where $c_t^G \equiv G_t / Z_t$, $i_t^G \equiv I_t^G / Z_t$ and $s_t \equiv S_t / Z_t$ denote expenditures types normalized by the ‘total’ technology trend Z_t . \bar{c}^G , \bar{i}^G and \bar{s} are the steady state values of the normalized spending types. B_t is (nominal) public debt at the end of period $t-1$, while δ_{t-1}^B is the real deficit in $t-1$. \bar{B} and $\bar{\delta}^B$ are the steady state (target) values of the ratios of the debt and deficit to real GDP. ε_t^{CG} , ε_t^{IG} , ε_t^S are exogenous AR(1) disturbances.

¹⁷ Given the high and distortionary tax burden in the Euro Area (40% of GDP), a model with a lump sum tax or with only *one* type of tax would be unrealistic.

¹⁸ It might be fruitful to extend our estimated model by allowing for tax based stimulus measures. This is beyond the scope of the present paper, i.a. because there are no time series on marginal tax rates for the Euro Area.

The normalized government transfer to the bank, $s_t^B \equiv S_t^B/Z_t$ is serially independent; this captures that idea that EA bank rescue measures were unanticipated, exceptional events.²⁰

The law of motion of the government capital stock is $K_{t+1}^G = K_t^G(1-\delta) + i_t^{IG} I_t^G$, where I_t^G is government investment (in final good unit). $i_t^G > 0$ is an exogenous efficiency parameters that differs from private investment efficiency, i_t . The government investment deflator and the private investment deflator are given by $P_t^{IG} \equiv P_t/I_t^{IG}$ and $P_t^I \equiv P_t/I_t^I$, respectively. The assumption that $i_t^{IG} \neq i_t$ is motivated by sizable empirical divergences between empirical public and private investment deflators. Capturing the dynamics of government purchases deflators in the model is important for an adequate representation of the government's budget constraint. For the same reason, we allow the government consumption deflator to differ from the private CPI (we take the private CPI as the empirical measure of the theoretical final good price)--we assume that one unit of the final good can be transformed into $i_t^{CG} > 0$ units of government consumption, where i_t^{CG} is an exogenous random variable. Thus, the government consumption deflator is $P_t^G \equiv P_t/I_t^{CG}$. The period t government budget constraint is:

$$P_t T_t + B_{t+1} = R_{t+1}^D B_t - P_t (\Delta_t^{G,p} + \Delta_t^{G,B}) + P_t^G G_t + P_t^{IG} I_t^G + P_t S_t^B,$$

where $T_t \equiv T_t^i + T_t^p + T_t^E$ is the total real tax revenue, net of transfers to workers.

3. Model solution and econometric approach

The model is transformed into a stationary system, by normalizing real activity, aggregate demand components and assets using the 'total' technology trend Z_t . We compute an approximate model solution by linearizing the transformed economy around its deterministic steady state.

¹⁹ The share of worker $s=i,p$ in the *total* transfer equals the steady state share of the worker's consumption in total consumption of the two workers.

²⁰ We also experimented with a feedback rule under which the transfer to the bank is set as a function of bank losses, sovereign debt, the deficit and output. However, our dataset only includes 4 quarters with bank support (bank support was concentrated in 2009), and thus it is impossible to reliably estimate such a decision rule (the estimated response coefficients are insignificant); model fit (as measured by the marginal likelihood) deteriorates when the feedback rule is assumed.

3.1. Calibrated parameters

One period represents one quarter in calendar time. Following the recent literature that estimates DSGE models (e.g., Smets and Wouters (2007)), we calibrate a subset of parameters to match trend features of the EA economy during the sample period (and other long-run data properties). We thus set the trend growth rates of GDP and of investment efficiency at 1.64% and 1.33% p.a., respectively (investment efficiency is measured as the ratio of the CPI to the private investment deflator). The state steady inflation rate is set at 2% p.a. The elasticity of intermediate output w.r.t. labor is set at 0.65. We set the parameter of the public capital externality at $\alpha_G=0.1$, as that value ensures that, in steady state, the marginal product of public capital equals that of private non-residential capital (given the government's decision rule for public investment). The depreciation rates of non-residential capital and of housing capital are set at 0.1 and 0.04 p.a.. The steady state foreign trade share is calibrated at $a=0.16$.

The steady state real interest rates on deposits, government bonds and foreign bonds are set at 1.70% p.a.. This pins down the (quarterly) subjective discount factor of the patient household: $\beta^p=0.9994$. The steady state real loan rate is set at 2.20% p.a. (average historical EA real household mortgage rate). Following Iacoviello and Neri (2010), we set the discount factor of the impatient household at the markedly lower value of 0.960, in order to ensure that the collateral constraint always binds in the stochastic equilibrium. The subjective discount factor of the entrepreneur is set at 0.974, which allows the model to match the empirical mean ratio of private non-residential capital to annual GDP of 1.05.²¹ (The ratio of total capital to GDP is 2.5).

The steady state ratio of bank loans to annual GDP is set at 45% (which corresponds to the mean ratio of outstanding household loans to GDP in the EA). The steady state bank capital ratio is set at $cr=0.08$, consistent with EA data. EA bank asset losses are only available for a short time span (2007q3-2010q4); we calibrate the autocorrelation of losses at 0.8, and treat losses in 2011 as a latent variable.²²

²¹ Equation (1) links the steady state marginal product of capital (and thus the ratio of residential capital to output) to β^E .

²² We treat loan losses as exogenous. As pointed out by a referee, it would be interesting to allow for endogeneity of losses with respect to aggregate activity. However, the short sample on EA loan losses makes it impossible to reliably estimate such an endogenous effect. Also, about half of the losses experienced by EA banks were due to external assets (largely located in the US), as mentioned above. Hence, a substantial part of EA bank losses was not caused by a worsening of macroeconomic conditions in the EA.

The empirical literature on credit-constrained household frequently reports that the income share of these households is in the range of 25% or above.²³ We set the steady state income share of credit-constrained households at 25%, and assume that, in steady state, the entrepreneur holds 50% of total net worth.²⁴

The steady state ratios of government debt and of household mortgage debt to annual GDP are set at 0.7 and 0.46, respectively (which corresponds to sample means of these ratios). In steady state, 23% of government debt is held by the bank. Tax rates are likewise calibrated on sample averages (the tax rates on consumption, labor income and dividends are set at 0.20, 0.30 and 0.27, respectively). Government transfers to households amount to 17% of GDP, and 23% of sovereign debt is held by the bank, in steady state.

3.2. Estimated parameters

The remaining parameters are estimated using a Bayesian approach (Otrok (2001), Smets and Wouters (2007)), with quarterly EA data for 1995q1-2011q4.²⁵ We assume that all exogenous variables are normally (or log-normally) distributed, and independent from each other. The estimation uses data on EA GDP and its components, the deflators of these aggregates, the interest rate on mortgage loans to households, the short-term government bond rate, bank asset write-downs, government support for banks, the bank capital ratio, government consumption, investment and transfers to households, public debt, and the nominal exchange rate. In addition, data on GDP and the short term interest in the rest of the world are used.²⁶ Note that the estimation uses historical data on the fiscal variables, on government bank support and on loan losses.²⁷ The empirical measure of bank support is the sum of bank recapitalizations and of purchases of impaired bank assets by EA governments.²⁸ See the Appendix for further information on the data.

Posterior estimates of key structural parameters are reported in Table 1. We set the prior mean duration between price and wage changes at 2 quarters; according to the posterior

²³ See Ratto et al. (2009), Campbell and Mankiw (1989, 1991) and Mankiw (2000) for estimates of that shares, based on aggregate data. Micro data also suggest a substantial fraction of credit constrained households (Souleles (2002), Johnson, Parker, and Souleles (2006)).

²⁴ According to the Luxembourg Wealth Study (Sierminska et al. (2006)), the top 10% of the population in the European Union owns roughly 50% of total net worth.

²⁵ We solve and estimate the model using the DYNARE software; see Adjemian et al. (2011) and Ratto et al. (2011).

²⁶ The estimation uses first differences of logged real activity variables, deflators and balance sheet variables, and levels of interest rates, write downs and bank support.

²⁷ By contrast, much of the recent literature that estimates DSGE models treats the shocks as latent variables, i.e. no direct empirical measures of shocks are used in estimation (e.g., Smets and Wouters (2007)).

²⁸ EA governments also supported banks by issuing guarantees on bank liabilities, thus lowering banks' funding costs. Modeling those guarantees is an interesting avenue for future research.

estimates, the mean durations between price and wage changes are 7 quarters and 4 quarters, respectively. The posterior estimate of the long-run Frisch labor supply elasticity $1/\chi$ is 0.22. The estimates also suggest strong habit formation for consumption, housing and hours worked. The curvature parameter of the bank's cost of deviating from the target bank capital ratio is estimated at $\phi^x=0.65$, implying that a 1 percentage point rise in the bank capital ratio lowers the spread between the mortgage loan rate and the deposit rate by 40 basis points p.a., which is in line with empirical estimates of the response of the loan rate spread reported by Kollmann (2012). We also find a stronger feedback from debt/GDP and deficit/GDP ratios to government investment than to government consumption and to government transfers to households.

4. The role of bank losses and fiscal policy in the Great Recession

Table 2 summarizes the economic performance of the EA in 2008-2010. EA (real) GDP fell by 4.2% in 2009, while consumption and private non-residential investment fell by 1.7% and 20.0%, respectively; residential investment fell by 9.3%. Private non-residential investment was thus the demand component most adversely affected by the crisis. By contrast, government consumption rose by 2.5% in 2009. This Section evaluates whether bank losses, government support for banks, and increased government spending generate responses of key macro aggregates that match the behavior of those aggregates during the financial crisis. All model predictions are computed at posterior modes of the estimated model parameters.

4.1. Impulse responses

The estimated model predicts that a loan loss shock generates a sizable reduction in real activity, while government support for banks has a substantial positive effect on output and consumption and, especially, on private investment. A rise in government consumption also raises output, but crowds out consumption and (especially) investment, in the short run.

Figure 1 shows dynamic effects of mortgage loan losses, of government support for the bank, of government consumption purchases, and of sovereign debt losses. In each case, an innovation worth 1% of steady state quarterly GDP is fed into the laws of motion of the relevant forcing variable. Predicted responses of GDP, private consumption, non-residential investment and employment are expressed in percentage deviations from steady state;

responses of the bank capital ratio are in percentage points, while responses of spreads are in basis points per annum.

4.1.1. Bank loan loss shock (Figure 1, Panel (a))

Due to the positive serial correlation of the loan loss process, an innovation to the bank loan loss worth 1% of *quarterly* steady state GDP produces a first-year loss of 0.74% of GDP, and a cumulative (total) loss of 1.25% of annual GDP. The loan loss leads to a persistent fall in the bank's capital; the bank capital *ratio* falls by 0.3 percentage points, on impact, and then slowly returns to the unshocked path. On impact, the loan rate spread ($R_{t+1}^L - R_{t+1}^D$) and the 'non-residential investment spread' ($E_t(R_{t+1}^K + \pi_{t+1}) - R_{t+1}^D$) rise by about 20 and 200 basis points (bp) per annum, respectively. Non-residential (private) investment falls sharply (-2.4%, on impact). Output and employment fall too, due to the fall in investment demand (given price stickiness). The bank capital constraint makes it costly for the bank to take more deposits to smooth the stream of bank dividends—the bank thus cuts her dividend. To smooth her consumption, the entrepreneur hence reduces physical investment in the intermediate-good firm. On impact, GDP falls by 0.17%—GDP continues to fall for 2 quarters after the shock, before slowly reverting to its pre-shock path. During the first year, GDP falls by 0.22%. Consumption falls likewise, because of the reduction in real activity, and because 50% of loan loss is an external loss (i.e. a wealth transfer to the rest of the world)—but notice that consumption falls more gradually than output and investment.

The cumulated asset losses of EA banks since 2007 amounted to 8.7% of annual GDP (see below). The model predicts that a loss shock of this cumulative magnitude generates reductions of GDP, non-residential investment and consumption of 1.5%, 21.7% and 0.9%, respectively, during the first year after the shock. These predicted responses are consistent with key features of the financial crisis—in particular with the sharp reduction in investment and the more muted fall in consumption.

4.1.2. Government support for banking (Figure 1, Panel (b))

Qualitatively, the effects of government support for the bank are mirror-images of the responses to the loan loss shock. The bank reacts to the government subsidy by increasing her capital, and by paying a higher dividend. The entrepreneur responds to this by raising physical investment in the intermediate good-producing firm. Thus, government support for banks stabilizes a component of aggregate demand that was especially adversely affected by

the crisis. The increase in bank capital is persistent, and it thus leads to a persistent reduction in the lending rate spread, and in the non-residential investment spread. Thus, mortgage lending increases. However, the entrepreneur allocates the additional funds received by the government mostly to non-residential investment and less to mortgage lending. This is a consequence of the fact that the bank rescue measure is a wealth transfer from workers to the entrepreneur (mortgage loans increase only slightly, as borrowers expect to pay higher future taxes). In the first quarter, the bank subsidy raises GDP and non-residential investment by 0.13% and 0.7%, respectively. The effect of the bank rescue measure is persistent: during the first (second) year, GDP rises by 0.11% (0.04%), while non-residential investment increases by 0.53% (0.26%) over the same horizon.²⁹ The cumulative GDP multiplier (ratio of cumulated GDP changes to cumulated fiscal spending changes) of the bank rescue measure is 0.44 during the first year (but is greater at longer horizons).

4.1.3. Government purchases (Figure 1, Panel (c))

The estimated law of motion of government consumption is highly persistent--an innovation to the law of motion of government consumption worth 1% of steady state quarterly GDP raises government consumption by 1.26% (1.21%) of GDP in year 1 (year 2). The cumulative increase in government consumption amounts to 5.10% of annual GDP. GDP rises by 0.81% (0.64%) of GDP in year 1 (year 2), and employment too increase persistently. Consumption and investment fall by 0.05% and 1.19%, respectively in year 1. Private consumption remains depressed thereafter, while investment returns to its pre-shock value in year 2, and then rises above the unshocked paths in years 3-5 (due to the rise in employment which increases the marginal product of capital).³⁰ The GDP multiplier is 0.64 in year 1, a value in the lower range of multipliers predicted by estimated New Keynesian models *without* banks--see, e.g., the models discussed in Coenen et al. (2012).³¹ A comparison with Panel (b) shows that government consumption has a larger impact multiplier than government support for banking,

²⁹ In comparing responses in Panels (a) and (b), one should bear in mind that bank support is i.i.d.; thus Panel (b) shows responses to a one-time bank support; by contrast, loan losses are serially correlated and thus a given loss innovation triggers a much greater cumulated loss.

³⁰ Private consumption rises slightly in the first two quarters, because the consumption of credit constrained households responds positively to the increase in their labor income. Consumption falls thereafter, as the rise in public debt triggers a reduction in government transfers to households.

³¹ Coenen et al. consider a fiscal spending shock that only lasts 2 years. With more persistent spending shock (as in the paper here), anticipated higher future (net) tax payments lead to a stronger and more rapid fall in private consumption and, thus a weaker expansion of GDP.

but that government consumption crowds out consumption and investment (in the short term), while bank support raises consumption and investment.³²

4.1.4. Sovereign default (Figure 1, Panel (d))

No sovereign default occurred during the sample period used for estimation (1995q1-2011q4). However, partial default on the debt of an EA government (Greece) occurred in 2012. It thus seems instructive to analyze the consequences of a sovereign debt default, using the model. The model predicts that the consequences of a default hinge crucially on whether the government defaults on debt that is held by the bank or on debt held by the (patient) household. The response to a default on debt closely resemble the consequences of a loss on mortgage loans: there is a significant and persistent fall in bank capital, a rise in spreads, and a fall in GDP, employment and investment.³³ Figure 1, Panel (d), considers a loss on bank-held sovereign debt which is of the same size and time profile as the loss shock on mortgage loans discussed above (i.e. the cumulated default amounts to 1.25% of annual GDP). In the first year, the sovereign loss triggers a 0.29% (2.28%) fall in GDP (investment). By contrast, a default that only affects sovereign debt held by the (patient) household hardly affects real activity—i.e. Ricardian equivalence then holds approximately. (Obviously, this assumes that default does not trigger subsequent financing restrictions for the government.)

4.2. EA banking shocks and fiscal policy in the financial crisis: historical decompositions

Figure 2 plots year-on-year (YoY) growth rates of EA GDP, private non-residential investment and private consumption, as well as the public debt/GDP ratio, in 2007-2011. (The mean 1995-2011 YoY growth rates (mean debt/GDP) have been subtracted from each of the plotted growth rate (debt/GDP) series.) The Figure also shows the contributions of banking and fiscal shocks to the historical series.

4.2.1. Bank losses, bank rescue measures and innovations to conventional fiscal instruments

Estimates of EA bank asset write-downs in the period 2007-2011 are shown in Figure 3. Write-downs were highest in 2009, amounting to 4.5% of GDP. Cumulated 2007-2011 write-

³² A model variant without an operative bank capital requirement ($\phi^x=0$) generates a slightly smaller GDP multiplier of government consumption. By contrast, the real effects of loan losses and of government support to banks are negligible when $\phi^x=0$, as then the lending spread (and the non-residential investment spread) are unaffected by shocks to the bank's capital (up to a first-order approximation).

³³ A key difference between the sovereign loss and the loan loss (as discussed above), is that 50% of the latter is an external loss. By contrast, the sovereign loss shock is a wealth transfer *within* the EA economy; that redistributive nature of the shock dampens the negative aggregate consumption response.

downs amount to 8.7% of 2009 GDP. EA Bank rescue measures during the financial crisis were likewise concentrated in the year 2009 (and especially in the second part of 2009). Table 3 documents that government purchases of impaired ('toxic') assets by banks and bank recapitalisations amounted to 2.84% and 1.88%, respectively, of EA GDP in 2009. Total government support for banks thus amounted to 4.7% of GDP in 2009. (As mentioned above, the estimation uses the sum of impaired asset purchases and of bank recapitalizations as a measure of bank support.)

Figure 4 plots the components of EA government consumption, government investment and transfers to households (normalized by an exponential trend fitted to GDP) that are solely accounted for by current and past *innovations* to the corresponding fiscal spending rules (see (5)-(7)). The Figure shows that these 'non-systematic' components of government consumption and transfers both rose strongly during the crisis, namely by about 2% of trend GDP, a clear indication of an expansionary fiscal stance. By contrast, non-systematic public investment spending rose only slightly in 2008-2011 (by less than 0.5% of GDP). The cumulative fiscal impulses in 2008-2011 amounted to 9.8% of trend GDP (of which 5.0%, 4.5% and 0.3%, respectively, were due to higher government consumption, transfers to households, and government investment). The average conventional fiscal impulse thus amounted to 2.6% of GDP, per year, in 2008-2011.³⁴

4.2.2. Historical decompositions of real activity and public debt

Figure 2 shows the contributions of different types of shocks to the historical time series of GDP, private non-residential investment, consumption (YoY growth rates), and of the public debt/GDP ratio. Specifically, we decompose the historical series into components due to: (i) fiscal shocks other than transfers ('Fiscal excluding transfers'); (ii) 'Transfers to households'; (iii) 'Bank support'; (iv) 'Bank asset losses'. The remainder ('Other') captures the effect of all other shocks.

The 'Fiscal, excl. transfers' and 'Transfers' components of the historical series correspond to predicted paths that obtain when residuals of the fitted fiscal spending rules are fed into the model. The 'Bank support' and 'Bank asset losses' components correspond to predicted series that are generated when the historical bank losses and bank support payments (Figure 3, Table 3) are fed into the model.

³⁴ These estimates of fiscal stimulus, based on estimated non-systematic innovations, include the workings of automatic stabilisers, and are larger than the discretionary fiscal measures announced by EA governments in

Our model suggests that, between late 2007 and the end of 2009, bank losses exerted a strong negative influence on EA bank capital, bank lending and real activity.³⁵ The Bank losses explain 26% of the fall in EA GDP and consumption, and 78% of the fall in EA non-residential investment, between 2007q1 and 2009q1. Consistent with the impulse responses discussed above, we thus find that investment is especially sensitive to loan loss shocks. The bank support measures in 2009 had a noticeable stabilizing effect on GDP and, especially, on consumption and investment. Bank support essentially off-set the effect of bank losses on GDP, in 2009. As bank support was concentrated in 2009, the absence of bank support in 2010 shows up as a negative contribution to GDP, consumption and investment YoY growth in 2010. The rise in transfers to households had a noticeable stabilizing effect on consumption, but hardly affected GDP and investment. Increased government consumption and investment helped to stabilize GDP in 2008-2009, but crowded out consumption, and had a slight negligible effect on investment.

The public debt/GDP ratio increased by about 20 percentage points in 2008-2011. Bank support accounts for about 18% of that rise in the debt/GDP ratio, while conventional fiscal stimulus explains 33% of the increase. Together, the fiscal and bank-related shocks account for about half of the rise in the debt/GDP ratio.

5. Conclusion

This paper has analyzed the impact of Euro Area (EA) bank asset losses, government support for banks, and conventional fiscal stimulus measures, using an estimated New Keynesian model with a bank. Our model traces out a transmission channel of these shocks to the EA real economy which is consistent with key features of the recent financial crisis, in particular with the strong decline of non-residential investment. Bank losses explain about a quarter of the fall in EA GDP and consumption in 2007-2009, and more than three quarter of the fall in private non-residential investment. Government support for banks was an effective tool for stabilizing output and consumption and, especially, physical investment, the component of aggregate demand most adversely affected by the financial crisis. The sizable increase in government purchases during the crisis helped to stabilize GDP, but crowded out

early 2009 (European Economic Recovery Plan): the discretionary measures for 2009 and 2010 amounted to 0.83% and 0.72% of EA GDP, respectively (Coenen et al., 2012).

³⁵ The ECB's Euro Area bank lending survey suggests a strong tightening of credit conditions that began in the second half of 2007, and culminated in late 2008 (Lehman collapse). Costs related to bank capital positions, as

consumption and investment. Higher transfers to households raised private consumption, but hardly affected GDP and investment.

well as risks on collateral demanded and expectations regarding economic conditions, are reported by a significant fraction of banks as having contributed to that tightening.

REFERENCES

- Adjemian, S., H. Bastani, M. Juillard, F. Mihoubi, G. Perendia, M. Ratto, and S. Villemot (2011). DYNARE: Reference manual, version 4. DYNARE Working Paper Series, 1. <http://ideas.repec.org/p/cpm/dynare/001.html>.
- Aschauer, David. 1989. Is Public Expenditure Productive? *Journal of Monetary Economics* 23, 177-282.
- Barro, Robert. 1990. Government Spending in a Simple Model of Endogenous Growth. *Journal of Political Economy* 98, S103-S125.
- Basu, Parantap and Robert Kollmann. 2012. Productive Government Expenditures and the Real Exchange Rate. The Manchester School (forthcoming).
- Bianchi, J., 2012. Efficient Bailouts? Working Paper, Ney York University.
- Calvo, Guillermo. 1983. Staggered Prices in a Utility-Maximizing Framework. *Journal of Monetary Economics* 12, 383–398.
- Campbell, John and Gregory Mankiw. 1989. Consumption, Income, and Interest Rates: Reinterpreting the Time Series Evidence. *NBER Macro Annual* 4, 185-216
- Campbell, John and Gregory Mankiw. 1991. The Response of Consumption to Income--a Cross Country Investigation. *European Economic Review* 35, 723-276
- Coenen, Günter, Chris Erceg, Charles Freedman, Davide Furceri, Michael Kumhof, René Lalonde, Douglas Laxton, Jesper Lindé, Annabelle Mourougane, Dirk Muir, Susanna Mursula, Carlos de Resende, John Roberts, Werner Roeger, Stephen Snudden, Mathias Trabandt and Jan in 't Veld. 2012. Effects of Fiscal Stimulus in Structural Models. *American Economic Journal: Macroeconomics*, 4: 22-68.
- Coenen, Günter, Roland Straub and Mathias Trabandt. 2012. Gauging the Effects of Fiscal Stimulus Packages in the Euro Area. Working Paper, ECB.
- Curdia, Vasco and Michael Woodford. 2009. Credit Frictions and Optimal Monetary Policy. Working Paper, Columbia University.
- Drautzburg, Thorsten and Harald Uhlig. 2011. Fiscal Stimulus and Distortionary Taxation. NBER Working Paper 17111.
- Erceg, Christopher, Andrew Levin and Dale Henderson. 2000. Optimal Monetary Policy with Staggered Wage and Price Contracts. *Journal of Monetary Economics* 46, 281–313.
- Forni, Lorenzo, L. Monteforte and Luca Sessa, 2009. The General Equilibrium Effects of Fiscal Policy: Estimates for the Euro Area. *Journal of Public Economics* 93, 559-585.
- Forni, Lorenzo and Massimiliano Pisani. 2010. Fiscal Policy in an Open Economy: Estimates for the Euro Area. Working Paper, Bank of Italy.
- Freixas, Xavier and Jean-Charles Rochet. 2008. *Microeconomics of Banking*. The MIT Press, Cambridge.
- Gerali, Andrea, Stefano Neri, Luca Sessa and Federico Signoretti. 2010. Credit and Banking in a DSGE Model of the Euro Area. *Journal of Money, Credit and Banking* 42, 107-141.
- Haavio, Markus, Antti Ripatti and Tuomas Takalo. 2012. Macroeconomic Effects of Bank Recapitalizations. Working Paper, Bank of Finland.
- Iacoviello, Matteo. 2005. House prices, collateral constraints and monetary policy in the business cycle. *American Economic Review* 95, 739—764.
- Iacoviello Matteo and Stefano Neri. 2010. Housing market spillovers: evidence from an estimated DSGE model. *American Economic Journal, Macroeconomics* 2, 125-64.
- In't Veld, Jan, Rafal Raciborski, Marco Ratto and Werner Roeger. 2011. The Recent Boom-Bust Cycle: the Relative Contribution of Capital Flows, Credit Supply and Asset Bubbles. *European Economic Review*, 55: 386-406.

- International Monetary Fund, 2010. Global Financial Stability Report (April).
- Johnson, David, Jonathan Parker, and Nicholas Souleles. 2006. Household Expenditure and the Income Tax Rebates of 2001. *American Economic Review* 96, 1589-1610
- Kollmann, Robert. 2001. The Exchange Rate in a Dynamic-Optimizing Business Cycle Model with Nominal Rigidities: A Quantitative Investigation, *Journal of International Economics* 55, 243-262.
- Kollmann, Robert. 2002. Monetary Policy Rules in the Open Economy: Effects on Welfare and Business Cycles, *Journal of Monetary Economics* 49, 989-1015.
- Kollmann, Robert, Zeno Enders and Gernot Müller. 2011. Global Banking and International Business Cycles. *European Economic Review*, 55: 407-426.
- Kollmann, Robert, Werner Roeger and Jan in't Veld. 2012. Fiscal Policy in a Financial Crisis: Standard Policy vs. Bank Rescue Measures. *American Economic Review* 102, 77-81.
- Kollmann, Robert. 2012. Global Banks, Financial Shocks and International Business Cycles: Evidence from an Estimated Models. Discussion Paper 8985, CEPR.
- Laeven, Luc and Fabian Valencia. 2011. The Real Effects of Financial Sector Interventions during Crises. Working Paper 11/45, International Monetary Fund.
- Leeper, Eric, Michael Plante and Nora Trauma. 2010. Dynamics of Fiscal Financing in the United States. *Journal of Econometrics* 156, 304-321.
- Leeper, Eric, Nora Traum and Todd Walker, 2011. The Fiscal Multiplier Morass: a Bayesian Perspective. NBER Working Paper 17444.
- Mankiw, Gregory. 2000. The Savers-Spenders Theory of Fiscal Policy. *American Economic Review* 90, 120–125.
- Meh, Césaire and Kevin Moran. The Role of Bank Capital in the Propagation of Shocks, *Journal of Economic Dynamics and Control* 34, 555-576.
- Otrok, Christopher. 2001. On Measuring the Welfare Cost of Business Cycles. *Journal of Monetary Economics* 47, 61-92.
- Paredes, Joan, Diego Pedregal and Javier Pérez. 2009. A Quarterly Fiscal Database for the Euro Area Based on Intra-Annual Fiscal Information, ECB Working Paper 1132.
- Ratto, Marco, Werner Roeger and Jan in't Veld. 2009. Fiscal Policy in an Estimated Open-Economy Model for the Euro Area. *Economic Modeling* 26, 222-233.
- Ratto, Marco, Azzini, Ivano, Bastani, Houtan and Sébastien Villemot. 2011. Beta-version of parallel routines: user manual. EUR – Scientific and Technical Research series – ISSN 1831-9424, DOI: 10.2788/97390.
- Roeger, Werner and Jan in't Veld. 2012. Evaluating the Macroeconomic Effects of Government Support Measures for Financial Institutions in the EU. *European Economy Papers* 453, European Commission.
- Sandri, Damiano and Fabian Valencia. 2012. Balance-Sheet Shocks and Recapitalizations. IMF Working Paper WP/12/68, International Monetary Fund.
- Sierminska, Eva. 2006. The Luxembourg Wealth Study – A Cross-Country Database for Household Wealth Research. *Journal of Economic Inequality* 4.
- Smets, Frank and Rafael Wouters. 2007. Shocks and Frictions in US Business Cycles: A Bayesian DSGE Approach. *American Economic Review* 97, 586-660.
- Souleles, Nicholas. 2002. Consumer Response to the Reagan Tax Cuts. *Journal of Public Economics* 85, 99-120
- Turnovsky, Stephen. 1999. Productive Government Expenditure in a Stochastically Growing Economy. *Macroeconomic Dynamics* 3, 544-70.
- Woodford, Michael. 1990. Public Debt as Private Liquidity. *American Economic Review* 80, 382-388.

DATA APPENDIX

A1. The following variables are used as observables

Euro Area variables:

- GDP, private consumption, government consumption, private non-residential investment, residential investment, government investment, net exports, employment. The estimation uses these variables at constant prices, plus corresponding deflators (where appropriate). As empirical measures of investment efficiency shocks, we use the ratios of private non-residential investment deflators, of private residential investment deflators, and of government investment, to the CPI.
- Residential property prices (new and existing dwellings)
- Bank capital to asset ratio; mortgage loans to households; bank write-downs (see below); government support for banks (see below).
- Short term government bond rate; household mortgage interest rate (available since 2003 only).
- Nominal government transfers to households (Paredes et al. (2009) database, with updates by authors); nominal government debt; nominal government interest payments

Rest-of-world variables:

Trade weighted average of GDP of 41 EA trading partners (current and constant prices); Nominal effective exchange rate (trade weighted average of 41 bilateral EA-trading partner exchange rates). US federal funds rate (used as a proxy of the world interest rate).

Sources: DG ECFIN, ECB Monthly Bulletin, Eurostat national accounts, IMF International Financial Statistics, US Federal Reserve, Bloomberg.

A2. Estimates of bank asset losses and of government support for banks in the EA

To construct an estimate of EA bank losses, we compute the sum of the write-downs of the 36 largest EA banks, as reported by Bloomberg (see Roeger and in't Veld (2012)). That data is available for the period 2007q3-2010q4. These 36 banks account for 80% of total EA bank assets. We multiplied aggregate write-downs for these banks by a factor 1/0.8 to construct an estimate of total EA bank write-downs, and we added EA government purchases of impaired bank assets to the scaled series (see below). The estimation uses the resulting 2007q3-2010q4 series, as an empirical measure of EA bank loan losses. We treat loan losses in 2011 as a latent variable. The loan losses (with model implied estimates for 2011) are shown in Figure 4.

Government support for banks during the financial crisis were concentrated in the year 2009 (Laeven and Valencia (2011)). Data on government support for banks in 2009 are reported in Table 3. (Source: European Commission services, based on surveys of euro area member states.) The bank support measures included recapitalizations ('capital injections into financial institutions') and purchases of impaired ('toxic') assets by governments ('impaired asset relief mechanisms'). The estimation uses the sum of recapitalizations and purchases of impaired assets by EA governments (in 2009) as an empirical measure of the theoretical bank rescue measure. Bank losses are assumed to equal zero, in the rest of the sample period.

Table 1. Prior and posterior distributions of key model parameters

Parameters	Prior distributions			Posterior distributions	
	Distrib.	Mean	s.d.	Mean	s.d.
(1)	(2)	(3)	(4)	(5)	(6)
Household preferences					
κ	Gamma	3.50	1.40	4.621	1.193
h^C	Beta	0.70	0.10	0.937	0.010
h^H	Beta	0.50	0.20	0.778	0.197
h^N	Beta	0.70	0.10	0.922	0.019
Bank capital constraint					
ϕ^x	Gamma	0.60	0.16	0.649	0.164
Fiscal policy rules					
ρ^{CG}	Beta	0.50	0.20	0.945	0.031
τ_B^{CG}	Gamma	0.02	0.01	0.006	0.003
τ_δ^{CG}	Gamma	0.02	0.01	0.010	0.006
ρ^{IG}	Beta	0.50	0.20	0.191	0.137
τ_B^{IG}	Gamma	0.02	0.01	0.014	0.004
τ_δ^{IG}	Gamma	0.02	0.01	0.012	0.006
ρ^S	Beta	0.50	0.20	0.667	0.181
τ_B^S	Gamma	0.02	0.01	0.007	0.005
τ_δ^S	Gamma	0.02	0.01	0.008	0.005
Monetary policy rules					
ρ^r	Beta	0.50	0.15	0.884	0.026
τ_π^r	Gamma	2.00	0.60	2.008	0.516
τ_Y^r	Gamma	1.00	0.40	1.077	0.286

Notes: Cols. (1) lists the parameters; Col. (2) indicates the distribution function of the prior. Cols. (3) and (4) show the means and the standard deviations (s.d.) of the prior distributions of the listed parameters, respectively. Cols. (5) and (6) report means and standard deviations of the posterior parameter distributions. Posterior distributions are computed using the Random Walk Metropolis algorithm.

Table 2: Euro Area - Financial Crisis 2008-2010:

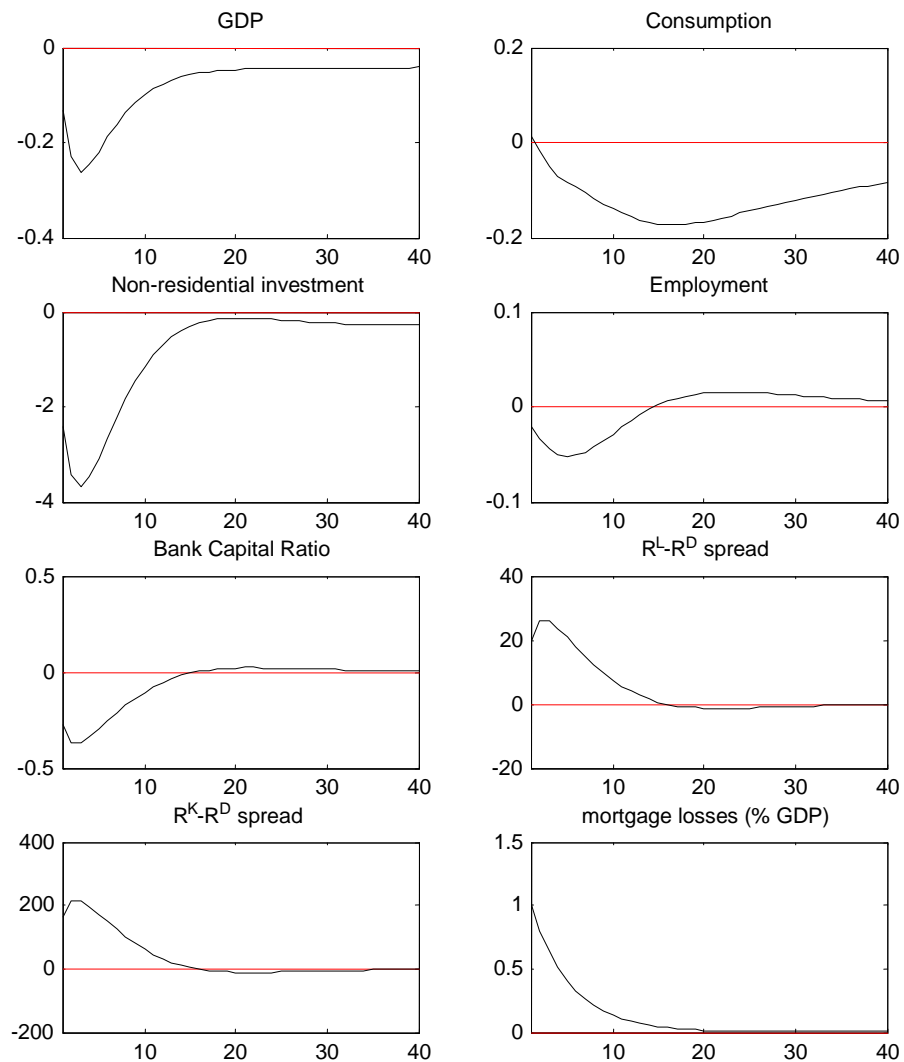
	Annual growth rates		
	2008	2009	2010
GDP	0.5	-4.2	1.8
Gov. Consumption	2.3	2.5	0.5
Consumption	0.7	-1.7	0.8
Non-residential investment	2.3	-20.0	4.3
Residential Investment	1.2	-9.3	-5.2
Employment	0.9	-1.9	-0.5

Table 3: EA government support for banks (cumulative, as % of GDP)

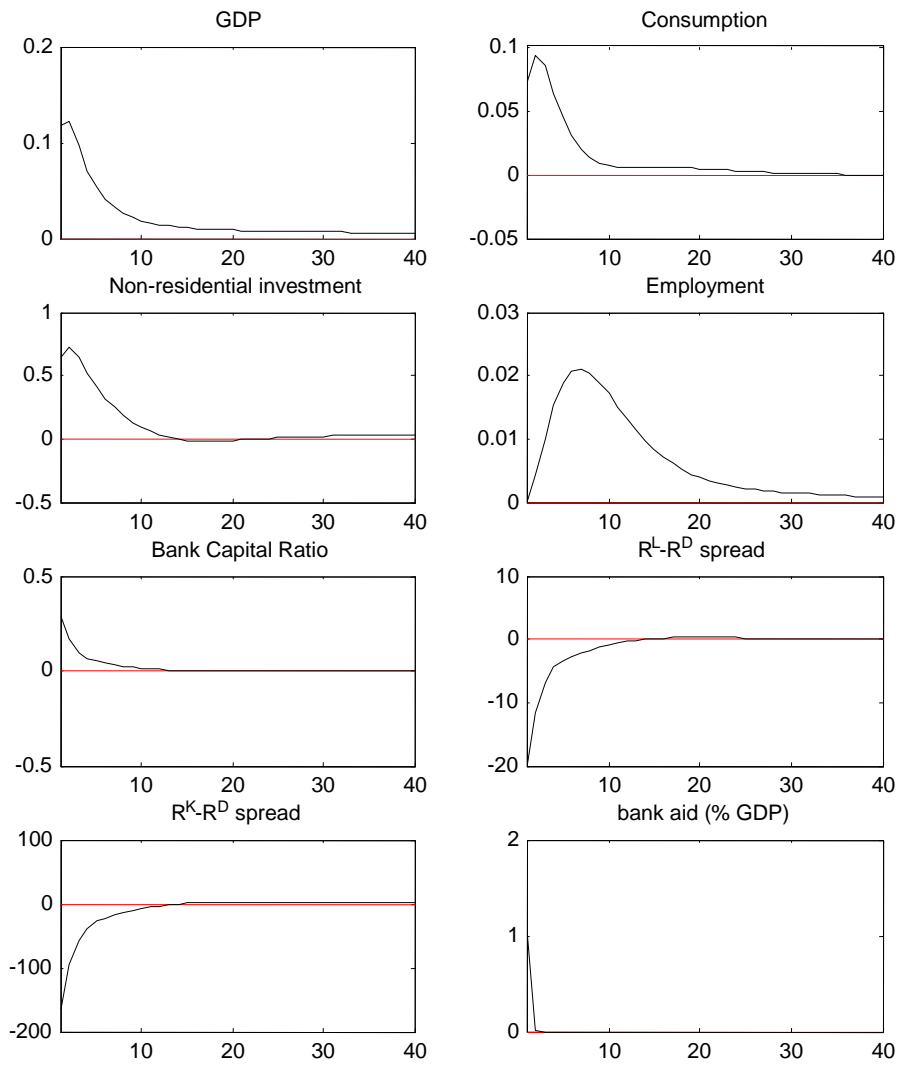
	Feb-09	May-09	Aug-09	Dec-09
<i>Purchases of impaired bank assets</i>	0.43	0.45	0.75	2.84
<i>Recapitalizations</i>	1.09	1.45	1.67	1.88
Total bank aid	1.52	1.90	2.42	4.72

Figure 1. Dynamic effects of shocks

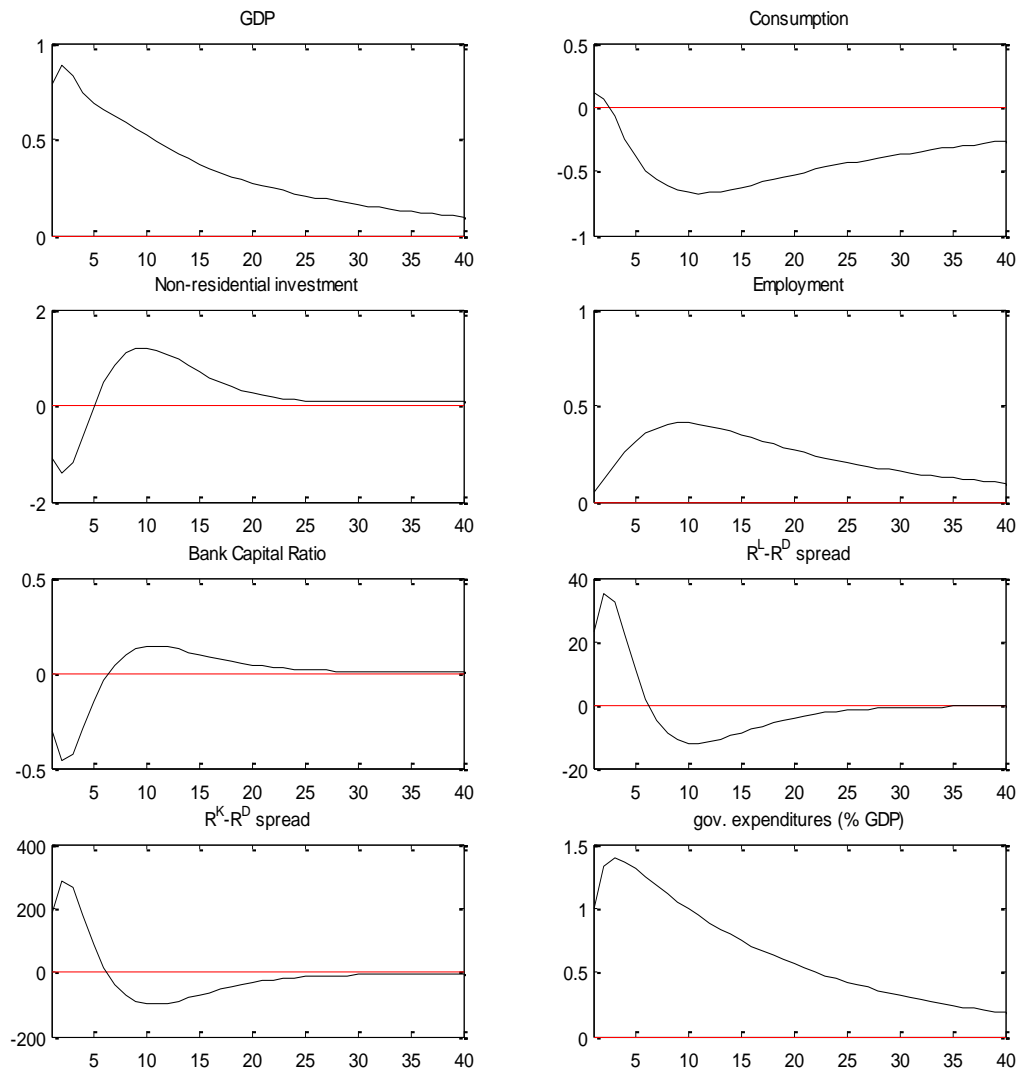
(a) Innovation to bank loan loss (1% of quarterly GDP)



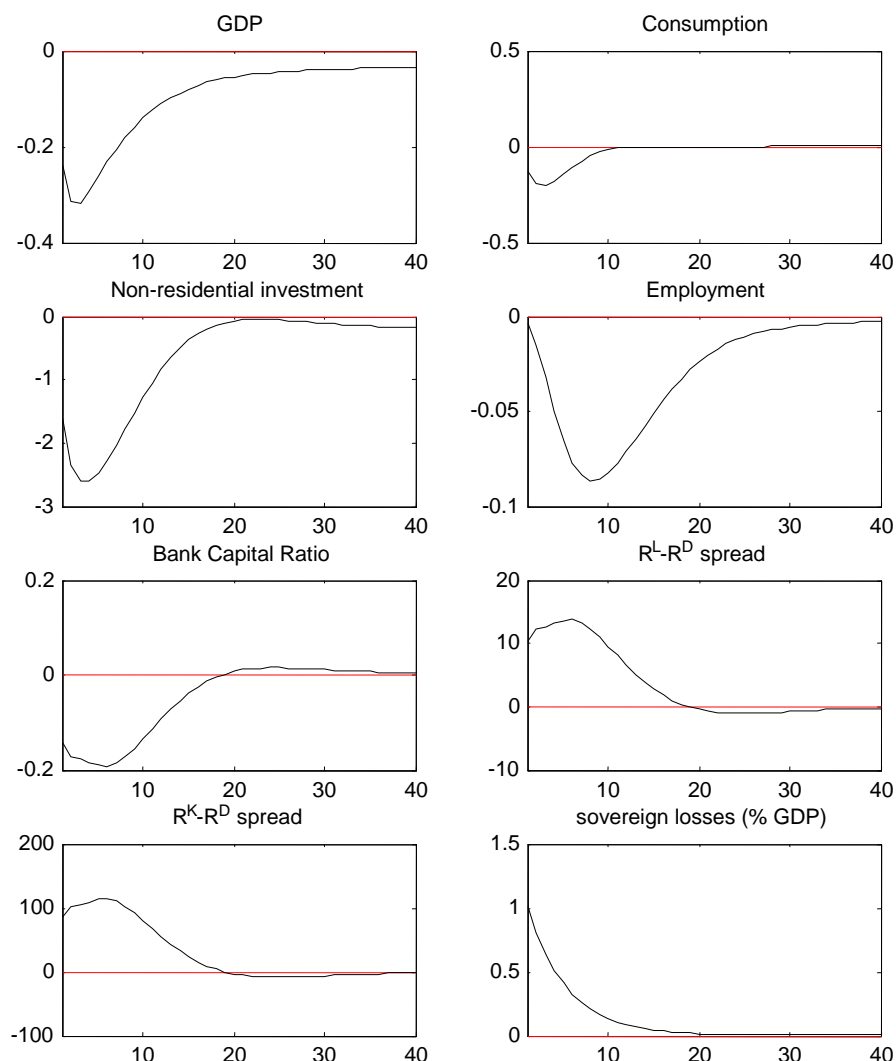
(b) One-time government support for bank (1% of quarterly GDP)



(c) Innovation to government consumption rule (1% of quarterly GDP)



(d) Innovation to default on sovereign debt held by the bank (1% of quarterly GDP)



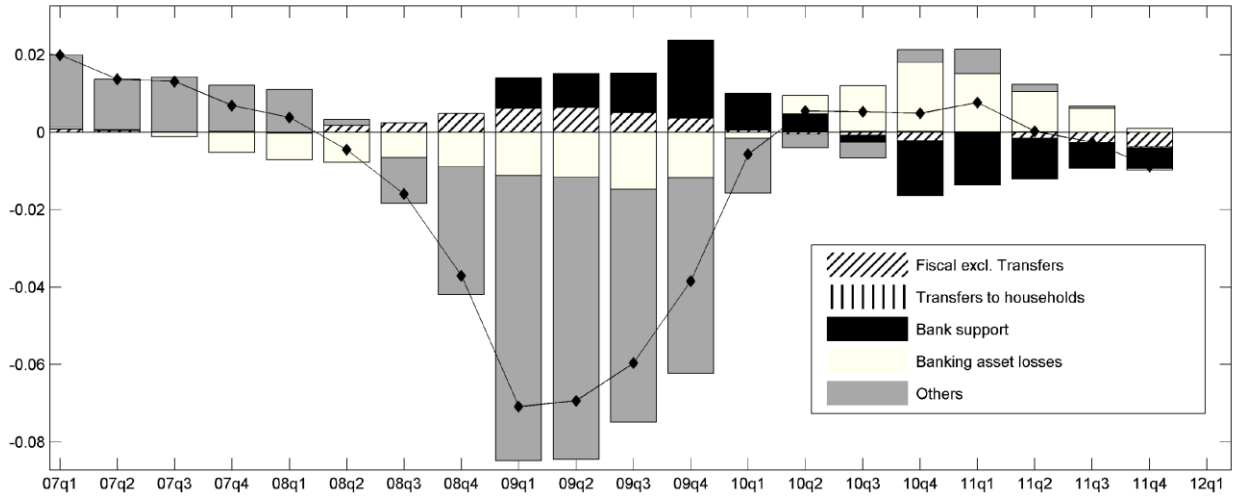
Notes: Dynamic responses to exogenous shocks are shown. Panel (a): innovation to law of motion of bank loan loss; Panel (b): one-time bank aid; Panel (c): innovation to policy rule for government purchases; Panel (c): loss to sovereign debt held by bank of same magnitude as loan loss shock. In all panels, the innovation represents 1% of GDP.

Responses of GDP, consumption (all private agents) and non-residential investment, employment are expressed as % deviation from the deterministic steady state. Responses of the bank capital ratio are expressed in percentage points. Responses of spreads are in basis points per annum.

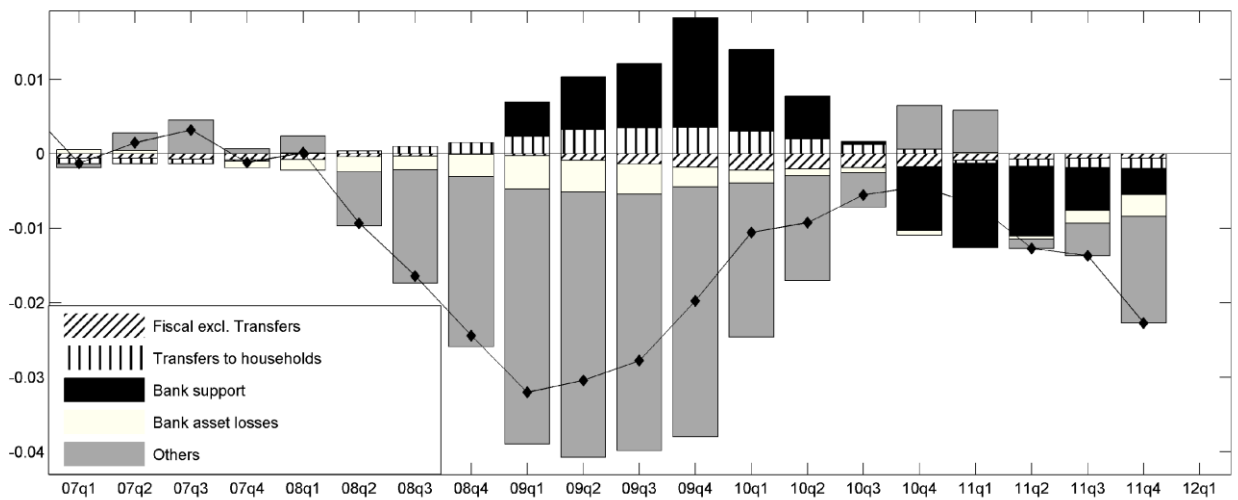
‘R^L-R^D spread’: loan rate spread $R_{t+1}^L - R_{t+1}^D$; ‘R^K-R^D spread’: ‘non-residential investment spread’ $E_t(R_{t+1}^K + \pi_{t+1}) - R_{t+1}^D$.

Figure 2. Historical decompositions of Euro Area variables

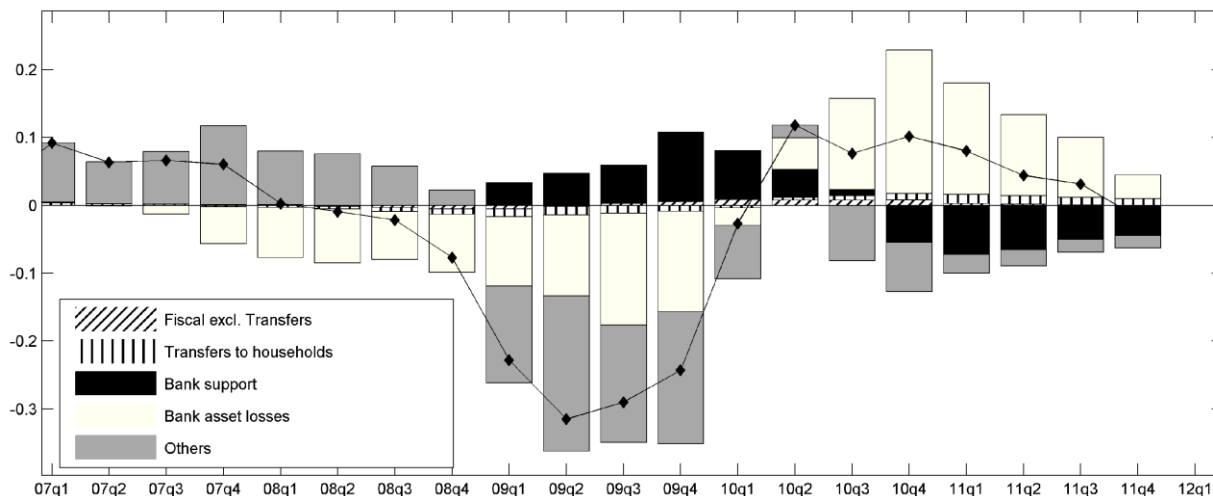
(a) YoY GDP growth (demeaned)



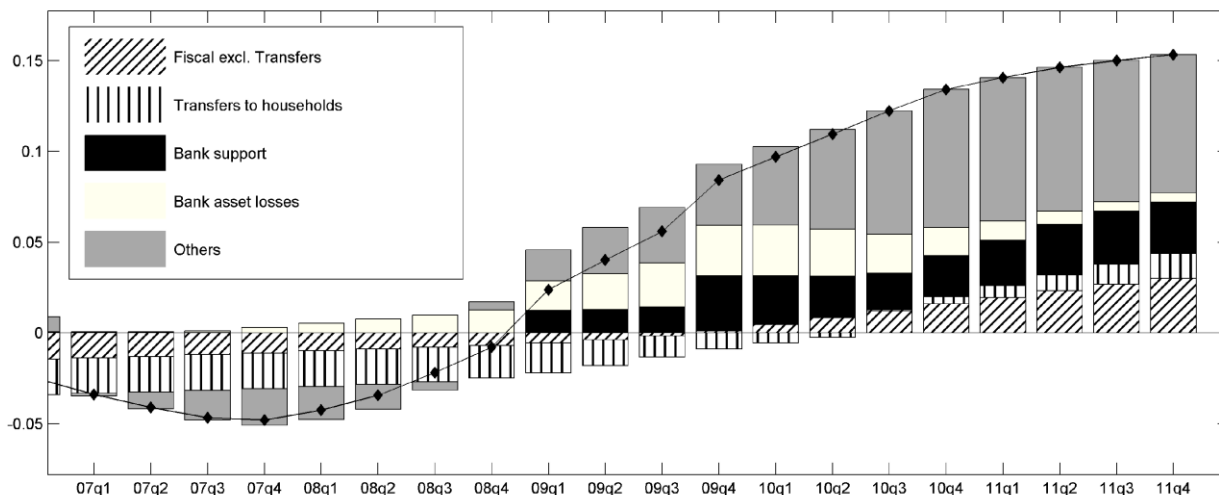
(b) YoY Consumption growth (demeaned)



(c) YoY private non-residential investment growth (demeaned)



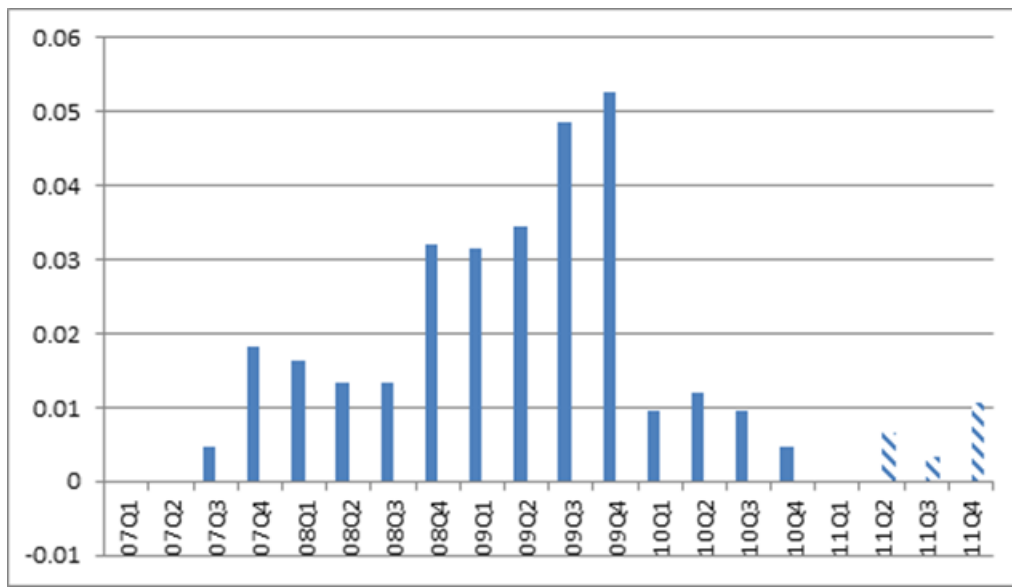
(d) Debt to GDP ratio (demeaned)



Note: Solid lines with dots show year-on-year (YoY) growth rates of EA GDP (Panel (a)), of private consumption (b) and of private non-residential investment (c), and the public debt ratio (Panel (d)), in 2007q1-2011q4. Mean YoY growth rates during the model estimation sample (1995-2011) are subtracted from plotted growth rates; the 1995-2011 mean debt/GDP ratio is subtracted from the plotted debt/GDP series.

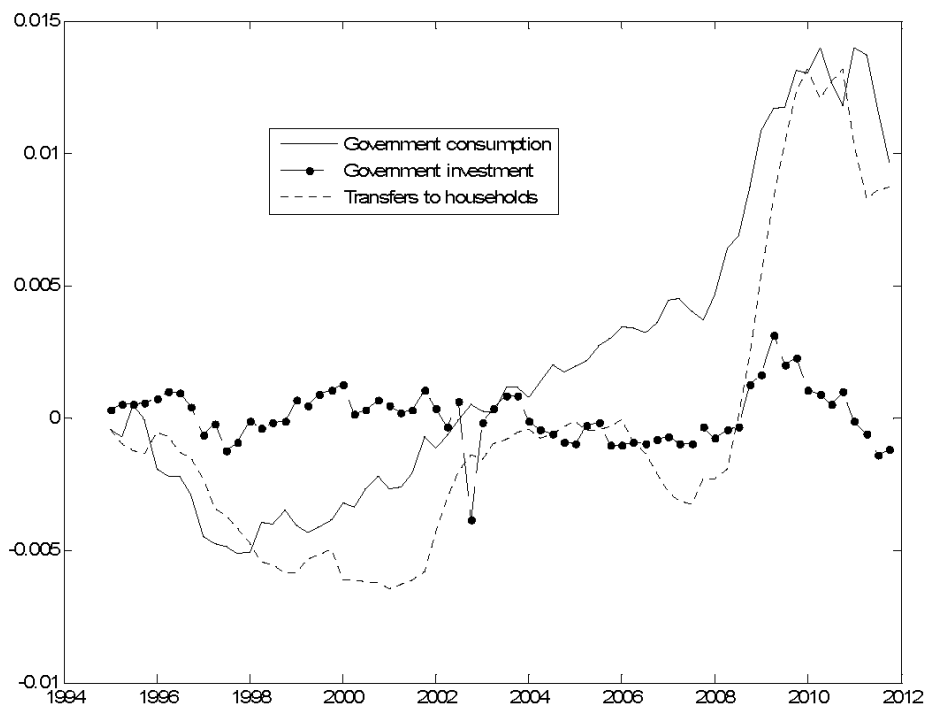
The bars show the contributions of different types of shocks to the historical series.

Figure 3--EA bank asset write-downs (as share of trend of quarterly GDP)



Note: values shown for 2011 (hashed shaded bars) are estimated through the lens of the model.

Figure 4—Non-systematic components of fiscal variables (as share of trend of quarterly GDP)



Note: The Figure plots the components of EA government consumption (solid line), government investment (dotted line) and transfers to households (dashed line), normalized by an exponential trend fitted to quarterly GDP, that are accounted for by current and past *innovations* to the corresponding fiscal spending rules (see (5)-(7)).

NATIONAL BANK OF BELGIUM - WORKING PAPERS SERIES

1. "Model-based inflation forecasts and monetary policy rules", by M. Dombrecht and R. Wouters, *Research Series*, February 2000.
2. "The use of robust estimators as measures of core inflation", by L. Aucremanne, *Research Series*, February 2000.
3. "Performances économiques des Etats-Unis dans les années nonante", by A. Nyssens, P. Butzen and P. Bisciari, *Document Series*, March 2000.
4. "A model with explicit expectations for Belgium", by P. Jeanfils, *Research Series*, March 2000.
5. "Growth in an open economy: Some recent developments", by S. Turnovsky, *Research Series*, May 2000.
6. "Knowledge, technology and economic growth: An OECD perspective", by I. Visco, A. Bassanini and S. Scarpetta, *Research Series*, May 2000.
7. "Fiscal policy and growth in the context of European integration", by P. Masson, *Research Series*, May 2000.
8. "Economic growth and the labour market: Europe's challenge", by C. Wyplosz, *Research Series*, May 2000.
9. "The role of the exchange rate in economic growth: A euro-zone perspective", by R. MacDonald, *Research Series*, May 2000.
10. "Monetary union and economic growth", by J. Vickers, *Research Series*, May 2000.
11. "Politique monétaire et prix des actifs: le cas des États-Unis", by Q. Wibaut, *Document Series*, August 2000.
12. "The Belgian industrial confidence indicator: Leading indicator of economic activity in the euro area?", by J.-J. Vanhaelen, L. Dresse and J. De Mulder, *Document Series*, November 2000.
13. "Le financement des entreprises par capital-risque", by C. Rigo, *Document Series*, February 2001.
14. "La nouvelle économie" by P. Bisciari, *Document Series*, March 2001.
15. "De kostprijs van bankkredieten", by A. Bruggeman and R. Wouters, *Document Series*, April 2001.
16. "A guided tour of the world of rational expectations models and optimal policies", by Ph. Jeanfils, *Research Series*, May 2001.
17. "Attractive prices and euro - Rounding effects on inflation", by L. Aucremanne and D. Cornille, *Documents Series*, November 2001.
18. "The interest rate and credit channels in Belgium: An investigation with micro-level firm data", by P. Butzen, C. Fuss and Ph. Vermeulen, *Research series*, December 2001.
19. "Openness, imperfect exchange rate pass-through and monetary policy", by F. Smets and R. Wouters, *Research series*, March 2002.
20. "Inflation, relative prices and nominal rigidities", by L. Aucremanne, G. Brys, M. Hubert, P. J. Rousseeuw and A. Struyf, *Research series*, April 2002.
21. "Lifting the burden: Fundamental tax reform and economic growth", by D. Jorgenson, *Research series*, May 2002.
22. "What do we know about investment under uncertainty?", by L. Trigeorgis, *Research series*, May 2002.
23. "Investment, uncertainty and irreversibility: Evidence from Belgian accounting data" by D. Cassimon, P.-J. Engelen, H. Meersman and M. Van Wouwe, *Research series*, May 2002.
24. "The impact of uncertainty on investment plans", by P. Butzen, C. Fuss and Ph. Vermeulen, *Research series*, May 2002.
25. "Investment, protection, ownership, and the cost of capital", by Ch. P. Himmelberg, R. G. Hubbard and I. Love, *Research series*, May 2002.
26. "Finance, uncertainty and investment: Assessing the gains and losses of a generalised non-linear structural approach using Belgian panel data", by M. Gérard and F. Verschueren, *Research series*, May 2002.
27. "Capital structure, firm liquidity and growth", by R. Anderson, *Research series*, May 2002.
28. "Structural modelling of investment and financial constraints: Where do we stand?", by J.-B. Chatelain, *Research series*, May 2002.
29. "Financing and investment interdependencies in unquoted Belgian companies: The role of venture capital", by S. Manigart, K. Baeyens, I. Verschueren, *Research series*, May 2002.
30. "Development path and capital structure of Belgian biotechnology firms", by V. Bastin, A. Corhay, G. Hübner and P.-A. Michel, *Research series*, May 2002.
31. "Governance as a source of managerial discipline", by J. Franks, *Research series*, May 2002.
32. "Financing constraints, fixed capital and R&D investment decisions of Belgian firms", by M. Cincera, *Research series*, May 2002.

33. "Investment, R&D and liquidity constraints: A corporate governance approach to the Belgian evidence", by P. Van Cayseele, *Research series*, May 2002.
34. "On the origins of the Franco-German EMU controversies", by I. Maes, *Research series*, July 2002.
35. "An estimated dynamic stochastic general equilibrium model of the euro area", by F. Smets and R. Wouters, *Research series*, October 2002.
36. "The labour market and fiscal impact of labour tax reductions: The case of reduction of employers' social security contributions under a wage norm regime with automatic price indexing of wages", by K. Burggraeve and Ph. Du Caju, *Research series*, March 2003.
37. "Scope of asymmetries in the euro area", by S. Ide and Ph. Moës, *Document series*, March 2003.
38. "De autonijverheid in België: Het belang van het toeleveringsnetwerk rond de assemblage van personenauto's", by F. Coppens and G. van Gastel, *Document series*, June 2003.
39. "La consommation privée en Belgique", by B. Eugène, Ph. Jeanfils and B. Robert, *Document series*, June 2003.
40. "The process of European monetary integration: A comparison of the Belgian and Italian approaches", by I. Maes and L. Quaglia, *Research series*, August 2003.
41. "Stock market valuation in the United States", by P. Bisciari, A. Durré and A. Nyssens, *Document series*, November 2003.
42. "Modeling the term structure of interest rates: Where do we stand?", by K. Maes, *Research series*, February 2004.
43. "Interbank exposures: An empirical examination of system risk in the Belgian banking system", by H. Degryse and G. Nguyen, *Research series*, March 2004.
44. "How frequently do prices change? Evidence based on the micro data underlying the Belgian CPI", by L. Aucremanne and E. Dhyne, *Research series*, April 2004.
45. "Firms' investment decisions in response to demand and price uncertainty", by C. Fuss and Ph. Vermeulen, *Research series*, April 2004.
46. "SMEs and bank lending relationships: The impact of mergers", by H. Degryse, N. Masschelein and J. Mitchell, *Research series*, May 2004.
47. "The determinants of pass-through of market conditions to bank retail interest rates in Belgium", by F. De Graeve, O. De Jonghe and R. Vander Vennet, *Research series*, May 2004.
48. "Sectoral vs. country diversification benefits and downside risk", by M. Emiris, *Research series*, May 2004.
49. "How does liquidity react to stress periods in a limit order market?", by H. Beltran, A. Durré and P. Giot, *Research series*, May 2004.
50. "Financial consolidation and liquidity: Prudential regulation and/or competition policy?", by P. Van Cayseele, *Research series*, May 2004.
51. "Basel II and operational risk: Implications for risk measurement and management in the financial sector", by A. Chapelle, Y. Crama, G. Hübner and J.-P. Peters, *Research series*, May 2004.
52. "The efficiency and stability of banks and markets", by F. Allen, *Research series*, May 2004.
53. "Does financial liberalization spur growth?", by G. Bekaert, C.R. Harvey and C. Lundblad, *Research series*, May 2004.
54. "Regulating financial conglomerates", by X. Freixas, G. Lóránth, A.D. Morrison and H.S. Shin, *Research series*, May 2004.
55. "Liquidity and financial market stability", by M. O'Hara, *Research series*, May 2004.
56. "Economisch belang van de Vlaamse zeehavens: Verslag 2002", by F. Lagneaux, *Document series*, June 2004.
57. "Determinants of euro term structure of credit spreads", by A. Van Landschoot, *Research series*, July 2004.
58. "Macroeconomic and monetary policy-making at the European Commission, from the Rome Treaties to the Hague Summit", by I. Maes, *Research series*, July 2004.
59. "Liberalisation of network industries: Is electricity an exception to the rule?", by F. Coppens and D. Vivet, *Document series*, September 2004.
60. "Forecasting with a Bayesian DSGE model: An application to the euro area", by F. Smets and R. Wouters, *Research series*, September 2004.
61. "Comparing shocks and frictions in US and euro area business cycle: A Bayesian DSGE approach", by F. Smets and R. Wouters, *Research series*, October 2004.
62. "Voting on pensions: A survey", by G. de Walque, *Research series*, October 2004.
63. "Asymmetric growth and inflation developments in the acceding countries: A new assessment", by S. Ide and P. Moës, *Research series*, October 2004.
64. "Importance économique du Port Autonome de Liège: rapport 2002", by F. Lagneaux, *Document series*, November 2004.

65. "Price-setting behaviour in Belgium: What can be learned from an ad hoc survey", by L. Aucremanne and M. Druant, *Research series*, March 2005.
66. "Time-dependent versus state-dependent pricing: A panel data approach to the determinants of Belgian consumer price changes", by L. Aucremanne and E. Dhyne, *Research series*, April 2005.
67. "Indirect effects – A formal definition and degrees of dependency as an alternative to technical coefficients", by F. Coppens, *Research series*, May 2005.
68. "Noname – A new quarterly model for Belgium", by Ph. Jeanfils and K. Burggraeve, *Research series*, May 2005.
69. "Economic importance of the Flemish maritime ports: Report 2003", by F. Lagneaux, *Document series*, May 2005.
70. "Measuring inflation persistence: A structural time series approach", by M. Dossche and G. Everaert, *Research series*, June 2005.
71. "Financial intermediation theory and implications for the sources of value in structured finance markets", by J. Mitchell, *Document series*, July 2005.
72. "Liquidity risk in securities settlement", by J. Devriese and J. Mitchell, *Research series*, July 2005.
73. "An international analysis of earnings, stock prices and bond yields", by A. Durré and P. Giot, *Research series*, September 2005.
74. "Price setting in the euro area: Some stylized facts from Individual Consumer Price Data", by E. Dhyne, L. J. Álvarez, H. Le Bihan, G. Veronese, D. Dias, J. Hoffmann, N. Jonker, P. Lünemann, F. Rumler and J. Vilmunen, *Research series*, September 2005.
75. "Importance économique du Port Autonome de Liège: rapport 2003", by F. Lagneaux, *Document series*, October 2005.
76. "The pricing behaviour of firms in the euro area: New survey evidence", by S. Fabiani, M. Druant, I. Hernando, C. Kwapil, B. Landau, C. Loupias, F. Martins, T. Mathä, R. Sabbatini, H. Stahl and A. Stokman, *Research series*, November 2005.
77. "Income uncertainty and aggregate consumption", by L. Pozzi, *Research series*, November 2005.
78. "Crédits aux particuliers - Analyse des données de la Centrale des Crédits aux Particuliers", by H. De Doncker, *Document series*, January 2006.
79. "Is there a difference between solicited and unsolicited bank ratings and, if so, why?", by P. Van Roy, *Research series*, February 2006.
80. "A generalised dynamic factor model for the Belgian economy - Useful business cycle indicators and GDP growth forecasts", by Ch. Van Nieuwenhuyze, *Research series*, February 2006.
81. "Réduction linéaire de cotisations patronales à la sécurité sociale et financement alternatif", by Ph. Jeanfils, L. Van Meensel, Ph. Du Caju, Y. Saks, K. Buysse and K. Van Cauter, *Document series*, March 2006.
82. "The patterns and determinants of price setting in the Belgian industry", by D. Cornille and M. Dossche, *Research series*, May 2006.
83. "A multi-factor model for the valuation and risk management of demand deposits", by H. Dewachter, M. Lyrío and K. Maes, *Research series*, May 2006.
84. "The single European electricity market: A long road to convergence", by F. Coppens and D. Vivet, *Document series*, May 2006.
85. "Firm-specific production factors in a DSGE model with Taylor price setting", by G. de Walque, F. Smets and R. Wouters, *Research series*, June 2006.
86. "Economic importance of the Belgian ports: Flemish maritime ports and Liège port complex - Report 2004", by F. Lagneaux, *Document series*, June 2006.
87. "The response of firms' investment and financing to adverse cash flow shocks: The role of bank relationships", by C. Fuss and Ph. Vermeulen, *Research series*, July 2006.
88. "The term structure of interest rates in a DSGE model", by M. Emiris, *Research series*, July 2006.
89. "The production function approach to the Belgian output gap, estimation of a multivariate structural time series model", by Ph. Moës, *Research series*, September 2006.
90. "Industry wage differentials, unobserved ability, and rent-sharing: Evidence from matched worker-firm data, 1995-2002", by R. Plasman, F. Rycx and I. Tojerow, *Research series*, October 2006.
91. "The dynamics of trade and competition", by N. Chen, J. Imbs and A. Scott, *Research series*, October 2006.
92. "A New Keynesian model with unemployment", by O. Blanchard and J. Gali, *Research series*, October 2006.
93. "Price and wage setting in an integrating Europe: Firm level evidence", by F. Abraham, J. Konings and S. Vanormelingen, *Research series*, October 2006.
94. "Simulation, estimation and welfare implications of monetary policies in a 3-country NOEM model", by J. Plasmans, T. Michalak and J. Fornero, *Research series*, October 2006.

95. "Inflation persistence and price-setting behaviour in the euro area: A summary of the Inflation Persistence Network evidence ", by F. Altissimo, M. Ehrmann and F. Smets, *Research series*, October 2006.
96. "How wages change: Micro evidence from the International Wage Flexibility Project", by W.T. Dickens, L. Goette, E.L. Groshen, S. Holden, J. Messina, M.E. Schweitzer, J. Turunen and M. Ward, *Research series*, October 2006.
97. "Nominal wage rigidities in a new Keynesian model with frictional unemployment", by V. Bodart, G. de Walque, O. Pierrard, H.R. Sneessens and R. Wouters, *Research series*, October 2006.
98. "Dynamics on monetary policy in a fair wage model of the business cycle", by D. De la Croix, G. de Walque and R. Wouters, *Research series*, October 2006.
99. "The kinked demand curve and price rigidity: Evidence from scanner data", by M. Dossche, F. Heylen and D. Van den Poel, *Research series*, October 2006.
100. "Lumpy price adjustments: A microeconomic analysis", by E. Dhyne, C. Fuss, H. Peseran and P. Sevestre, *Research series*, October 2006.
101. "Reasons for wage rigidity in Germany", by W. Franz and F. Pfeiffer, *Research series*, October 2006.
102. "Fiscal sustainability indicators and policy design in the face of ageing", by G. Langenus, *Research series*, October 2006.
103. "Macroeconomic fluctuations and firm entry: Theory and evidence", by V. Lewis, *Research series*, October 2006.
104. "Exploring the CDS-bond basis", by J. De Wit, *Research series*, November 2006.
105. "Sector concentration in loan portfolios and economic capital", by K. Düllmann and N. Masschelein, *Research series*, November 2006.
106. "R&D in the Belgian pharmaceutical sector", by H. De Doncker, *Document series*, December 2006.
107. "Importance et évolution des investissements directs en Belgique", by Ch. Piette, *Document series*, January 2007.
108. "Investment-specific technology shocks and labor market frictions", by R. De Bock, *Research series*, February 2007.
109. "Shocks and frictions in US business cycles: A Bayesian DSGE approach", by F. Smets and R. Wouters, *Research series*, February 2007.
110. "Economic impact of port activity: A disaggregate analysis. The case of Antwerp", by F. Coppens, F. Lagneaux, H. Meersman, N. Sellekaerts, E. Van de Voorde, G. van Gastel, Th. Vanelander, A. Verhetsel, *Document series*, February 2007.
111. "Price setting in the euro area: Some stylised facts from individual producer price data", by Ph. Vermeulen, D. Dias, M. Dossche, E. Gautier, I. Hernando, R. Sabbatini, H. Stahl, *Research series*, March 2007.
112. "Assessing the gap between observed and perceived inflation in the euro area: Is the credibility of the HICP at stake?", by L. Aucremanne, M. Collin and Th. Stragier, *Research series*, April 2007.
113. "The spread of Keynesian economics: A comparison of the Belgian and Italian experiences", by I. Maes, *Research series*, April 2007.
114. "Imports and exports at the level of the firm: Evidence from Belgium", by M. Muûls and M. Pisu, *Research series*, May 2007.
115. "Economic importance of the Belgian ports: Flemish maritime ports and Liège port complex - Report 2005", by F. Lagneaux, *Document series*, May 2007.
116. "Temporal distribution of price changes: Staggering in the large and synchronization in the small", by E. Dhyne and J. Konieczny, *Research series*, June 2007.
117. "Can excess liquidity signal an asset price boom?", by A. Bruggeman, *Research series*, August 2007.
118. "The performance of credit rating systems in the assessment of collateral used in Eurosystem monetary policy operations", by F. Coppens, F. González and G. Winkler, *Research series*, September 2007.
119. "The determinants of stock and bond return comovements", by L. Baele, G. Bekaert and K. Inghelbrecht, *Research series*, October 2007.
120. "Monitoring pro-cyclicality under the capital requirements directive: Preliminary concepts for developing a framework", by N. Masschelein, *Document series*, October 2007.
121. "Dynamic order submission strategies with competition between a dealer market and a crossing network", by H. Degryse, M. Van Achter and G. Wuyts, *Research series*, November 2007.
122. "The gas chain: Influence of its specificities on the liberalisation process", by C. Swartenbroeckx, *Document series*, November 2007.
123. "Failure prediction models: Performance, disagreements, and internal rating systems", by J. Mitchell and P. Van Roy, *Research series*, December 2007.
124. "Downward wage rigidity for different workers and firms: An evaluation for Belgium using the IWFP procedure", by Ph. Du Caju, C. Fuss and L. Wintr, *Research series*, December 2007.
125. "Economic importance of Belgian transport logistics", by F. Lagneaux, *Document series*, January 2008.

126. "Some evidence on late bidding in eBay auctions", by L. Wintr, *Research series*, January 2008.
127. "How do firms adjust their wage bill in Belgium? A decomposition along the intensive and extensive margins", by C. Fuss, *Research series*, January 2008.
128. "Exports and productivity – Comparable evidence for 14 countries", by The International Study Group on Exports and Productivity, *Research series*, February 2008.
129. "Estimation of monetary policy preferences in a forward-looking model: A Bayesian approach", by P. Ilbas, *Research series*, March 2008.
130. "Job creation, job destruction and firms' international trade involvement", by M. Pisu, *Research series*, March 2008.
131. "Do survey indicators let us see the business cycle? A frequency decomposition", by L. Dresse and Ch. Van Nieuwenhuyze, *Research series*, March 2008.
132. "Searching for additional sources of inflation persistence: The micro-price panel data approach", by R. Raciborski, *Research series*, April 2008.
133. "Short-term forecasting of GDP using large monthly datasets - A pseudo real-time forecast evaluation exercise", by K. Barhoumi, S. Benk, R. Cristadoro, A. Den Reijer, A. Jakaitiene, P. Jelonek, A. Rua, G. Rünstler, K. Ruth and Ch. Van Nieuwenhuyze, *Research series*, June 2008.
134. "Economic importance of the Belgian ports: Flemish maritime ports, Liège port complex and the port of Brussels - Report 2006", by S. Vennix, *Document series*, June 2008.
135. "Imperfect exchange rate pass-through: The role of distribution services and variable demand elasticity", by Ph. Jeanfils, *Research series*, August 2008.
136. "Multivariate structural time series models with dual cycles: Implications for measurement of output gap and potential growth", by Ph. Moës, *Research series*, August 2008.
137. "Agency problems in structured finance - A case study of European CLOs", by J. Keller, *Document series*, August 2008.
138. "The efficiency frontier as a method for gauging the performance of public expenditure: A Belgian case study", by B. Eugène, *Research series*, September 2008.
139. "Exporters and credit constraints. A firm-level approach", by M. Muûls, *Research series*, September 2008.
140. "Export destinations and learning-by-exporting: Evidence from Belgium", by M. Pisu, *Research series*, September 2008.
141. "Monetary aggregates and liquidity in a neo-Wicksellian framework", by M. Canzoneri, R. Cumby, B. Diba and D. López-Salido, *Research series*, October 2008.
142. "Liquidity, inflation and asset prices in a time-varying framework for the euro area", by Ch. Baumeister, E. Durinck and G. Peersman, *Research series*, October 2008.
143. "The bond premium in a DSGE model with long-run real and nominal risks", by G. D. Rudebusch and E. T. Swanson, *Research series*, October 2008.
144. "Imperfect information, macroeconomic dynamics and the yield curve: An encompassing macro-finance model", by H. Dewachter, *Research series*, October 2008.
145. "Housing market spillovers: Evidence from an estimated DSGE model", by M. Iacoviello and S. Neri, *Research series*, October 2008.
146. "Credit frictions and optimal monetary policy", by V. Cúrdia and M. Woodford, *Research series*, October 2008.
147. "Central Bank misperceptions and the role of money in interest rate rules", by G. Beck and V. Wieland, *Research series*, October 2008.
148. "Financial (in)stability, supervision and liquidity injections: A dynamic general equilibrium approach", by G. de Walque, O. Pierrard and A. Rouabah, *Research series*, October 2008.
149. "Monetary policy, asset prices and macroeconomic conditions: A panel-VAR study", by K. Assenmacher-Wesche and S. Gerlach, *Research series*, October 2008.
150. "Risk premiums and macroeconomic dynamics in a heterogeneous agent model", by F. De Graeve, M. Dossche, M. Emiris, H. Sneessens and R. Wouters, *Research series*, October 2008.
151. "Financial factors in economic fluctuations", by L. J. Christiano, R. Motto and M. Rotagno, *Research series*, to be published.
152. "Rent-sharing under different bargaining regimes: Evidence from linked employer-employee data", by M. Rusinek and F. Rycx, *Research series*, December 2008.
153. "Forecast with judgment and models", by F. Monti, *Research series*, December 2008.
154. "Institutional features of wage bargaining in 23 European countries, the US and Japan", by Ph. Du Caju, E. Gautier, D. Momferatou and M. Ward-Warmedinger, *Research series*, December 2008.
155. "Fiscal sustainability and policy implications for the euro area", by F. Balassone, J. Cunha, G. Langenus, B. Manzke, J. Pavot, D. Prammer and P. Tommasino, *Research series*, January 2009.
156. "Understanding sectoral differences in downward real wage rigidity: Workforce composition, institutions, technology and competition", by Ph. Du Caju, C. Fuss and L. Wintr, *Research series*, February 2009.

157. "Sequential bargaining in a New Keynesian model with frictional unemployment and staggered wage negotiation", by G. de Walque, O. Pierrard, H. Sneessens and R. Wouters, *Research series*, February 2009.
158. "Economic importance of air transport and airport activities in Belgium", by F. Kupfer and F. Lagneaux, *Document series*, March 2009.
159. "Rigid labour compensation and flexible employment? Firm-Level evidence with regard to productivity for Belgium", by C. Fuss and L. Wintr, *Research series*, March 2009.
160. "The Belgian iron and steel industry in the international context", by F. Lagneaux and D. Vivet, *Document series*, March 2009.
161. "Trade, wages and productivity", by K. Behrens, G. Mion, Y. Murata and J. Südekum, *Research series*, March 2009.
162. "Labour flows in Belgium", by P. Heuse and Y. Saks, *Research series*, April 2009.
163. "The young Lamfalussy: An empirical and policy-oriented growth theorist", by I. Maes, *Research series*, April 2009.
164. "Inflation dynamics with labour market matching: Assessing alternative specifications", by K. Christoffel, J. Costain, G. de Walque, K. Kuester, T. Linzert, S. Millard and O. Pierrard, *Research series*, May 2009.
165. "Understanding inflation dynamics: Where do we stand?", by M. Dossche, *Research series*, June 2009.
166. "Input-output connections between sectors and optimal monetary policy", by E. Kara, *Research series*, June 2009.
167. "Back to the basics in banking? A micro-analysis of banking system stability", by O. De Jonghe, *Research series*, June 2009.
168. "Model misspecification, learning and the exchange rate disconnect puzzle", by V. Lewis and A. Markiewicz, *Research series*, July 2009.
169. "The use of fixed-term contracts and the labour adjustment in Belgium", by E. Dhyne and B. Mahy, *Research series*, July 2009.
170. "Analysis of business demography using markov chains – An application to Belgian data", by F. Coppens and F. Verduyn, *Research series*, July 2009.
171. "A global assessment of the degree of price stickiness - Results from the NBB business survey", by E. Dhyne, *Research series*, July 2009.
172. "Economic importance of the Belgian ports: Flemish maritime ports, Liège port complex and the port of Brussels - Report 2007", by C. Mathys, *Document series*, July 2009.
173. "Evaluating a monetary business cycle model with unemployment for the euro area", by N. Groshenny, *Research series*, July 2009.
174. "How are firms' wages and prices linked: Survey evidence in Europe", by M. Druant, S. Fabiani and G. Kezdi, A. Lamo, F. Martins and R. Sabbatini, *Research series*, August 2009.
175. "Micro-data on nominal rigidity, inflation persistence and optimal monetary policy", by E. Kara, *Research series*, September 2009.
176. "On the origins of the BIS macro-prudential approach to financial stability: Alexandre Lamfalussy and financial fragility", by I. Maes, *Research series*, October 2009.
177. "Incentives and tranche retention in securitisation: A screening model", by I. Fender and J. Mitchell, *Research series*, October 2009.
178. "Optimal monetary policy and firm entry", by V. Lewis, *Research series*, October 2009.
179. "Staying, dropping, or switching: The impacts of bank mergers on small firms", by H. Degryse, N. Masschelein and J. Mitchell, *Research series*, October 2009.
180. "Inter-industry wage differentials: How much does rent sharing matter?", by Ph. Du Caju, F. Rycx and I. Tojerow, *Research series*, October 2009.
181. "Empirical evidence on the aggregate effects of anticipated and unanticipated US tax policy shocks", by K. Mertens and M. O. Ravn, *Research series*, November 2009.
182. "Downward nominal and real wage rigidity: Survey evidence from European firms", by J. Babecký, Ph. Du Caju, T. Kosma, M. Lawless, J. Messina and T. Rõõm, *Research series*, November 2009.
183. "The margins of labour cost adjustment: Survey evidence from European firms", by J. Babecký, Ph. Du Caju, T. Kosma, M. Lawless, J. Messina and T. Rõõm, *Research series*, November 2009.
184. "Discriminatory fees, coordination and investment in shared ATM networks" by S. Ferrari, *Research series*, January 2010.
185. "Self-fulfilling liquidity dry-ups", by F. Malherbe, *Research series*, March 2010.
186. "The development of monetary policy in the 20th century - some reflections", by O. Issing, *Research series*, April 2010.
187. "Getting rid of Keynes? A survey of the history of macroeconomics from Keynes to Lucas and beyond", by M. De Vroey, *Research series*, April 2010.
188. "A century of macroeconomic and monetary thought at the National Bank of Belgium", by I. Maes, *Research series*, April 2010.

189. "Inter-industry wage differentials in EU countries: What do cross-country time-varying data add to the picture?", by Ph. Du Caju, G. Kátay, A. Lamo, D. Nicolitsas and S. Poelhekke, *Research series*, April 2010.
190. "What determines euro area bank CDS spreads?", by J. Annaert, M. De Ceuster, P. Van Roy and C. Vespro, *Research series*, May 2010.
191. "The incidence of nominal and real wage rigidity: An individual-based sectoral approach", by J. Messina, Ph. Du Caju, C. F. Duarte, N. L. Hansen, M. Izquierdo, *Research series*, June 2010.
192. "Economic importance of the Belgian ports: Flemish maritime ports, Liège port complex and the port of Brussels - Report 2008", by C. Mathys, *Document series*, July 2010.
193. "Wages, labor or prices: how do firms react to shocks?", by E. Dhyne and M. Druant, *Research series*, July 2010.
194. "Trade with China and skill upgrading: Evidence from Belgian firm level data", by G. Mion, H. Vandenbussche, and L. Zhu, *Research series*, September 2010.
195. "Trade crisis? What trade crisis?", by K. Behrens, G. Corcos and G. Mion, *Research series*, September 2010.
196. "Trade and the global recession", by J. Eaton, S. Kortum, B. Neiman and J. Romalis, *Research series*, October 2010.
197. "Internationalization strategy and performance of small and medium sized enterprises", by J. Onkelinx and L. Sleuwaegen, *Research series*, October 2010.
198. "The internationalization process of firms: From exports to FDI?", by P. Conconi, A. Sapir and M. Zanardi, *Research series*, October 2010.
199. "Intermediaries in international trade: Direct versus indirect modes of export", by A. B. Bernard, M. Grazzi and C. Tomasi, *Research series*, October 2010.
200. "Trade in services: IT and task content", by A. Ariu and G. Mion, *Research series*, October 2010.
201. "The productivity and export spillovers of the internationalisation behaviour of Belgian firms", by M. Dumont, B. Merlevede, C. Piette and G. Rayp, *Research series*, October 2010.
202. "Market size, competition, and the product mix of exporters", by T. Mayer, M. J. Melitz and G. I. P. Ottaviano, *Research series*, October 2010.
203. "Multi-product exporters, carry-along trade and the margins of trade", by A. B. Bernard, I. Van Beveren and H. Vandenbussche, *Research series*, October 2010.
204. "Can Belgian firms cope with the Chinese dragon and the Asian tigers? The export performance of multi-product firms on foreign markets" by F. Abraham and J. Van Hove, *Research series*, October 2010.
205. "Immigration, offshoring and American jobs", by G. I. P. Ottaviano, G. Peri and G. C. Wright, *Research series*, October 2010.
206. "The effects of internationalisation on domestic labour demand by skills: Firm-level evidence for Belgium", by L. Cuyvers, E. Dhyne, and R. Soeng, *Research series*, October 2010.
207. "Labour demand adjustment: Does foreign ownership matter?", by E. Dhyne, C. Fuss and C. Mathieu, *Research series*, October 2010.
208. "The Taylor principle and (in-)determinacy in a New Keynesian model with hiring frictions and skill loss", by A. Rannenberg, *Research series*, November 2010.
209. "Wage and employment effects of a wage norm: The Polish transition experience" by A. de Crombrughe and G. de Walque, *Research series*, February 2011.
210. "Estimating monetary policy reaction functions: A discrete choice approach" by J. Boeckx, *Research series*, February 2011.
211. "Firm entry, inflation and the monetary transmission mechanism" by V. Lewis and C. Poilly, *Research series*, February 2011.
212. "The link between mobile telephony arrears and credit arrears" by H. De Doncker, *Document series*, March 2011.
213. "Development of a financial health indicator based on companies' annual accounts", by D. Vivet, *Document series*, April 2011.
214. "Wage structure effects of international trade: Evidence from a small open economy", by Ph. Du Caju, F. Rycx and I. Tojerow, *Research series*, April 2011.
215. "Economic importance of the Belgian ports: Flemish maritime ports, Liège port complex and the port of Brussels - Report 2009", by C. Mathys, *Document series*, June 2011.
216. "Verti-zontal differentiation in monopolistic competition", by F. Di Comite, J.-F. Thisse and H. Vandenbussche, *Research series*, October 2011.
217. "The evolution of Alexandre Lamfalussy's thought on the international and European monetary system (1961-1993)" by I. Maes, *Research series*, November 2011.
218. "Economic importance of air transport and airport activities in Belgium – Report 2009", by X. Deville and S. Vennix, *Document series*, December 2011.

219. "Comparative advantage, multi-product firms and trade liberalisation: An empirical test", by C. Fuss and L. Zhu, *Research series*, January 2012.
220. "Institutions and export dynamics", by L. Araujo, G. Mion and E. Ornelas, *Research series*, February 2012.
221. "Implementation of EU legislation on rail liberalisation in Belgium, France, Germany and the Netherlands", by X. Deville and F. Verduyn, *Document series*, March 2012.
222. "Tommaso Padoa-Schioppa and the origins of the euro", by I. Maes, *Document series*, March 2012.
223. "(Not so) easy come, (still) easy go? Footloose multinationals revisited", by P. Blanchard, E. Dhyne, C. Fuss and C. Mathieu, *Research series*, March 2012.
224. "Asymmetric information in credit markets, bank leverage cycles and macroeconomic dynamics", by A. Rannenberg, *Research series*, April 2012.
225. "Economic importance of the Belgian ports: Flemish maritime ports, Liège port complex and the port of Brussels - Report 2010", by C. Mathys, *Document series*, July 2012.
226. "Dissecting the dynamics of the US trade balance in an estimated equilibrium model", by P. Jacob and G. Peersman, *Research series*, August 2012.
227. "Regime switches in volatility and correlation of financial institutions", by K. Boudt, J. Daniélsson, S.J. Koopman and A. Lucas, *Research series*, October 2012.
228. "Measuring and testing for the systemically important financial institutions", by C. Castro and S. Ferrari, *Research series*, October 2012.
229. "Risk, uncertainty and monetary policy", by G. Bekaert, M. Hoerova and M. Lo Duca, *Research series*, October 2012.
230. "Flights to safety", by L. Baele, G. Bekaert, K. Inghelbrecht and M. Wei, *Research series*, October 2012.
231. "Macroprudential policy, countercyclical bank capital buffers and credit supply: Evidence from the Spanish dynamic provisioning experiments", by G. Jiménez, S. Ongena, J.-L. Peydró and J. Saurina, *Research series*, October 2012.
232. "Bank/sovereign risk spillovers in the European debt crisis", by V. De Bruyckere, M. Gerhardt, G. Schepens and R. Vander Vennet, *Research series*, October 2012.
233. "A macroeconomic framework for quantifying systemic risk", by Z. He and A. Krishnamurthy, *Research series*, October 2012.
234. "Fiscal policy, banks and the financial crisis", by R. Kollmann, M. Ratto, W. Roeger and J. in't Veld, *Research series*, October 2012.